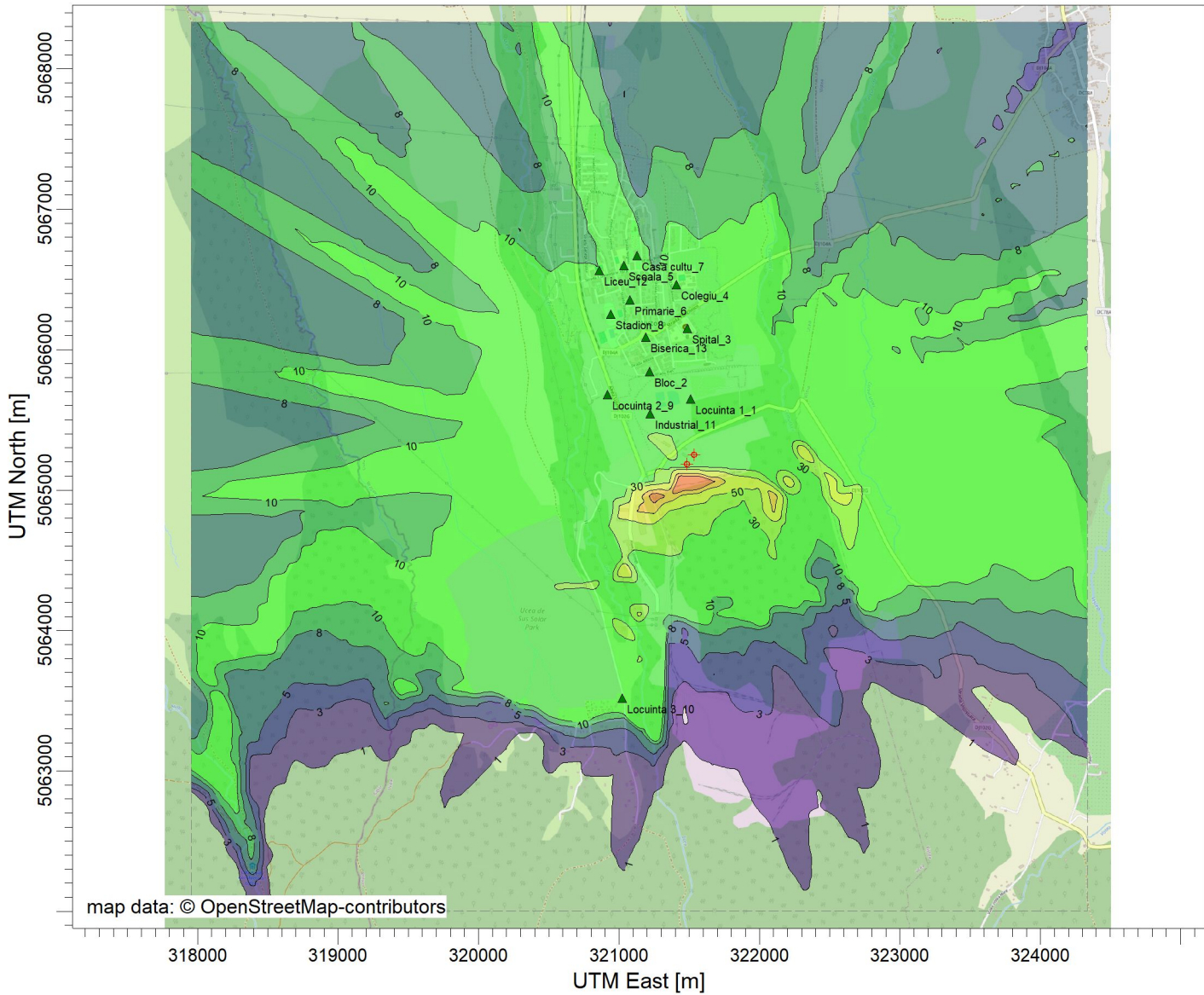


PROJECT TITLE:

**Stație de epurare ape uzate industriale rezultate de la fabrica Purolite Victoria și evacuarea acestora în râul Olt
Metanol_Concentratie 30min_Calm atmosferic**



ug/m³

PLOT FILE OF HIGH 1ST HIGH 30.0-MIN VALUES FOR SOURCE GROUP: ALL

COMMENTS:

STAS 12574-87
Prag de intervenție:
CMA 30 min = 1000 ug/m3
Prag de alertă:
P alertă = 700 ug/m3

MODELING OPTIONS:

**CONC, ELEV, AND, LOW_WIND,
RURAL, ALPHA, OPTIONS,
MODELING, USED:, FLAT,**

RECEPTORS:

3734

OUTPUT TYPE:

Concentration

MAX:

144,9707

UNITS:

ug/m³

SCALE:

1:46.000

0 1 km

PROJECT NO.:

PROJECT TITLE:

Stație de epurare ape uzate industriale rezultate de la fabrica Purolite Victoria și evacuarea acestora în râul Olt
Metanol_Concentrație 30min_Percentila 98_Calm atmosferic

COMMENTS:

STAS 12574-87
Prag de intervenție:
CMA 30 min = 1000 µg/m3
Prag de alertă:
P alertă = 700 µg/m3

MODELING OPTIONS:

CONC, ELEV, USED:, MODELING,
NONFAULT, FLAT, OPTIONS,
LOW_WIND, AND, ALPHA, RURAL

RECEPTORS:

3734

OUTPUT TYPE:

Concentration

MAX:

13,8833

UNITS:

ug/m^3

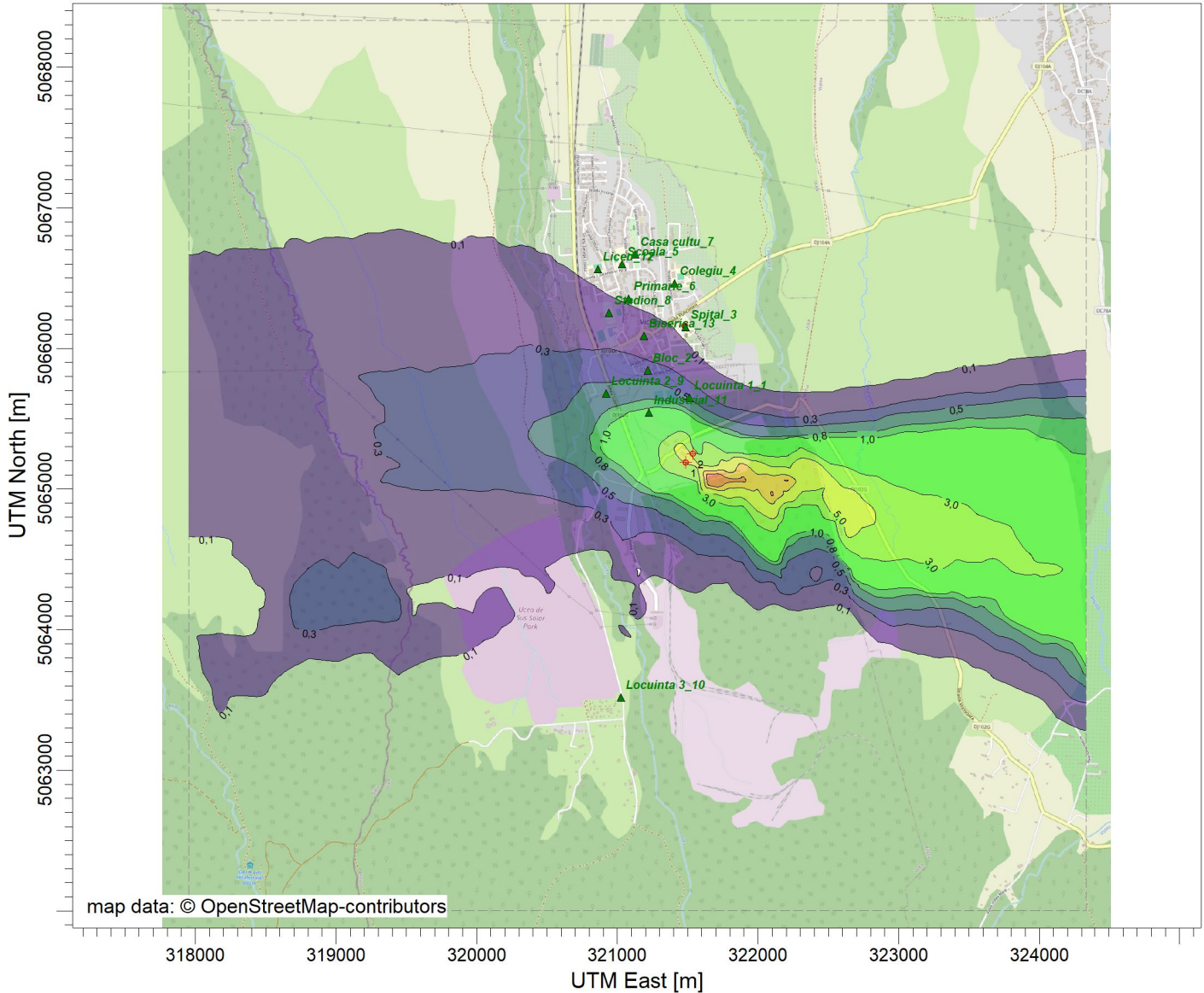
SCALE:

1:46.000

0

1 km

PROJECT NO.:



ug/m^3

PLOT FILE OF 98.00TH PERCENTILE 30.0-MIN VALUES FOR SOURCE GROUP: ALL

13,9

10,0

8,0

5,0

3,0

1,0

0,8

0,5

0,3

0,1

0,1

PROJECT TITLE:

Stație de epurare ape uzate industriale rezultate de la fabrica Purolite Victoria și evacuarea acestora în râul Olt
Metanol_Concentrație orară_Calm atmosferic

COMMENTS:

STAS 12574-87
Prag de intervenție:
CMA orar = 1070 µg/m3
Prag de alertă:
P alertă = 749 µg/m3

SOURCES:

2

RECEPTORS:

3734

OUTPUT TYPE:

Concentration

MAX:

135 ug/m^3

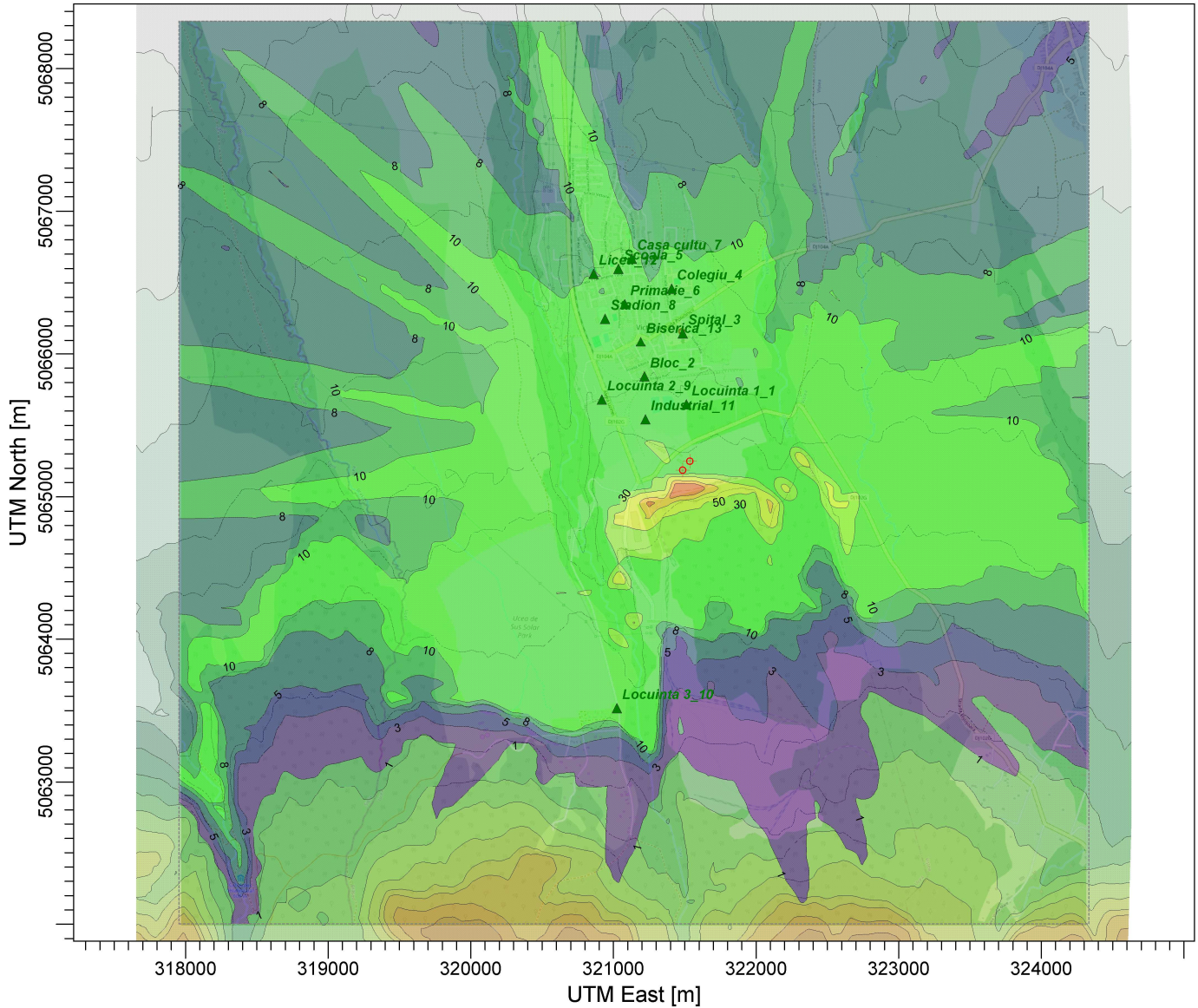
SCALE:

1:46.000

0

1 km

PROJECT NO.:



ug/m^3

PLOT FILE OF HIGH 1ST HIGH 1-HR VALUES FOR SOURCE GROUP: ALL

Max: 135 [ug/m^3] at (321462,86, 5065061,85)

PROJECT TITLE:

Stație de epurare ape uzate industriale rezultate de la fabrica Purolite Victoria și evacuarea acestora în râul Olt
Metanol_Concentrație orară_Percentila 98_Calm atmosferic

COMMENTS:

STAS 12574-87
Prag de intervenție:
CMA orar = 1070 $\mu\text{g}/\text{m}^3$
Prag de alertă:
P alertă = 749 $\mu\text{g}/\text{m}^3$

SOURCES:

2

RECEPTORS:

3734

OUTPUT TYPE:

Concentration

MAX:

13,0 $\mu\text{g}/\text{m}^3$

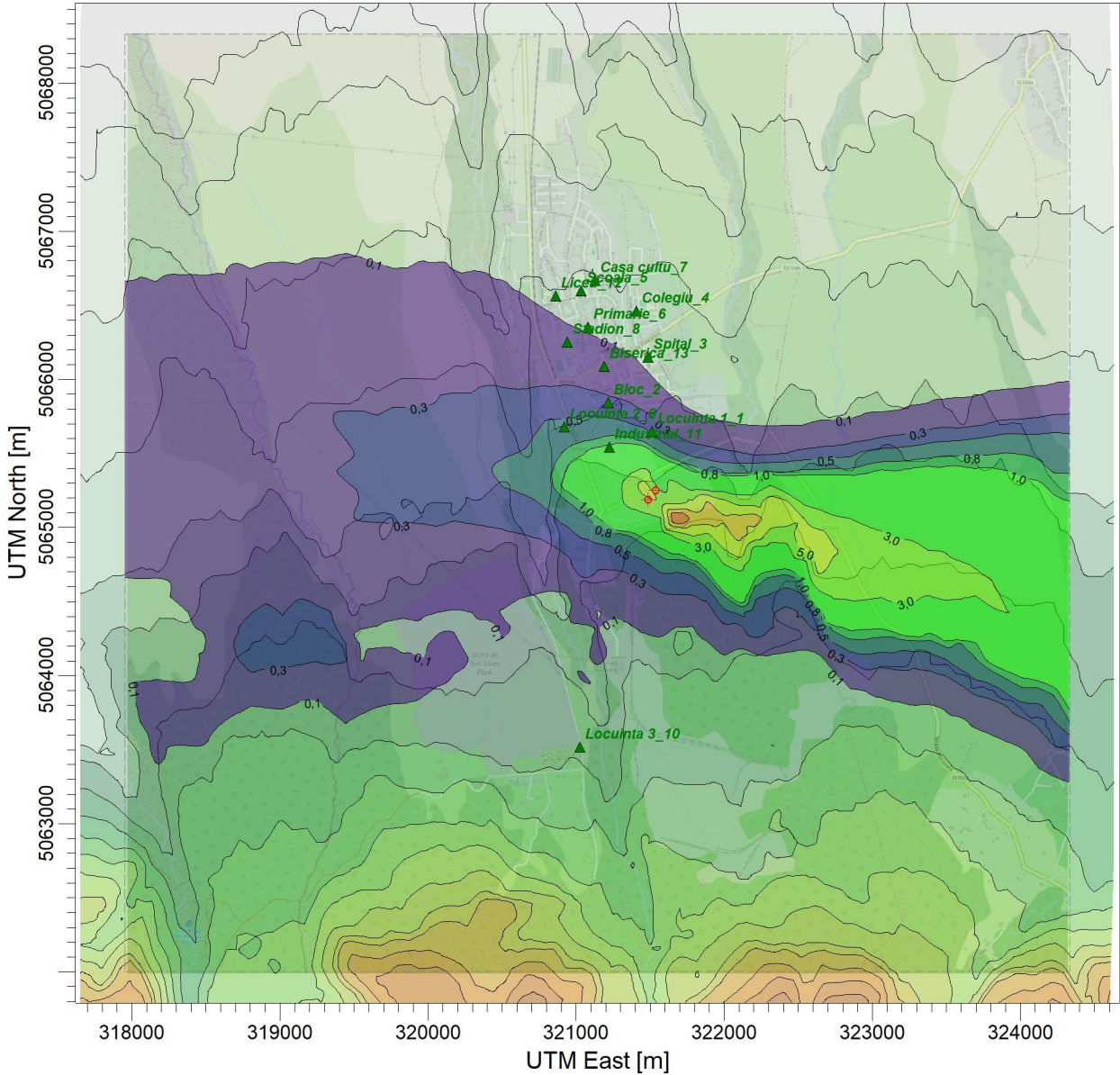
SCALE:

1:46.000

0

1 km

PROJECT NO.:



$\mu\text{g}/\text{m}^3$

PLOT FILE OF 98.00TH PERCENTILE 1-HR VALUES FOR SOURCE GROUP: ALL

Max: 13,0 [$\mu\text{g}/\text{m}^3$] at (321675,50, 5065061,85)

PROJECT TITLE:

Stație de epurare ape uzate industriale rezultate de la fabrica Purolite Victoria și evacuarea acestora în râul Olt
Metanol_ppm

COMMENTS:

Limită miros
CMA = 33 ppm

MODELING OPTIONS:

CONC, ELEV, AND, LOW_WIND,
RURAL, ALPHA, OPTIONS,
MODELING, USED:, FLAT,

RECEPTORS:

3734

OUTPUT TYPE:

Concentration

MAX:

0,1032

UNITS:

PPM

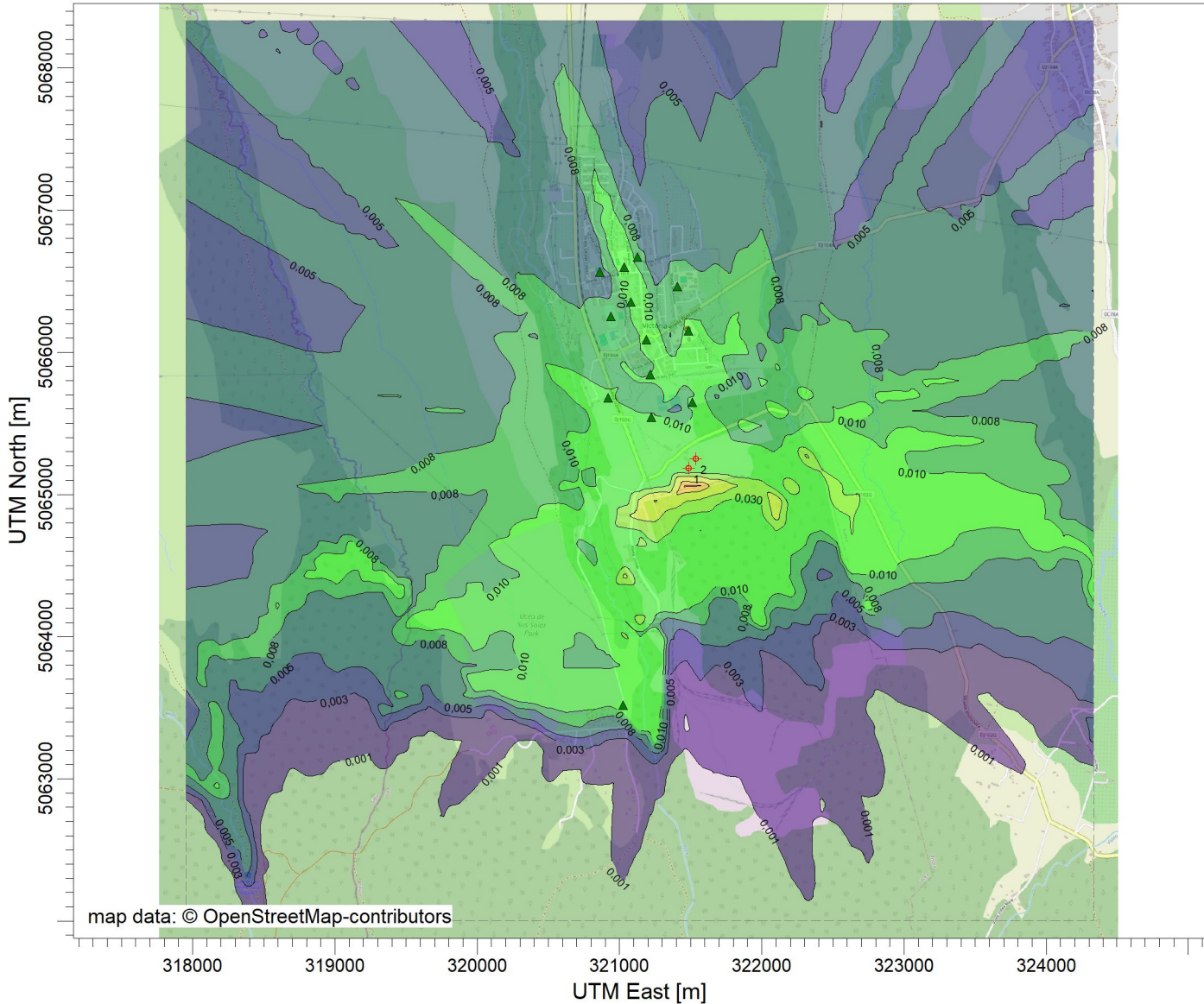
SCALE:

1:46.000

0

1 km

PROJECT NO.:



PPM

PLOT FILE OF HIGH 1ST HIGH 1-HR VALUES FOR SOURCE GROUP: ALL

Stație de epurare ape uzate industriale rezultate de la fabrica Purolite Victoria și evacuarea acestora în râul Olt
Metanol Concentrație zilnică Calm atmosferic

STAS 12574-87
Prag de intervenție:
CMA zilnic = 500 µg/m³
Prag de alertă:
P alertă = 350 µg/m³

2

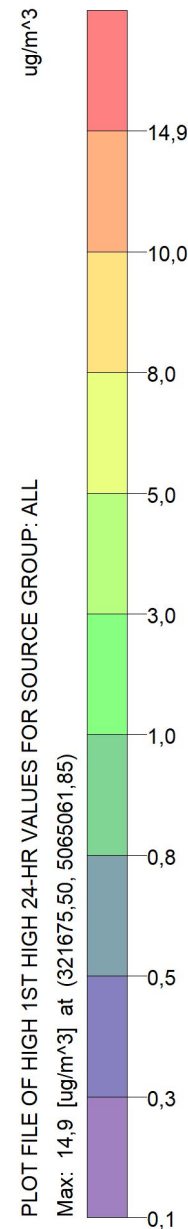
3734

Concentration

14,9 ug/m³

1:46.000

A scale bar indicating a distance of 1 km, with a midpoint marked.



PLOT FILE OF HIGH 1ST HIGH 24-HR VALUES FOR SOURCE GROUP: ALL

Max: 14,9 [ug/m^3] at (321675,50, 5065061,85)

PROJECT TITLE:

Stație de epurare ape uzate industriale rezultate de la fabrica Purolite Victoria și evacuarea acestora în râul Olt
Metanol_Concentrație zilnică_Percentila 98_Calm atmosferic

COMMENTS:

STAS 12574-87
Prag de intervenție:
CMA zilnic = 500 µg/m3
Prag de alertă:
P alertă = 350 µg/m3

SOURCES:

2

RECEPTORS:

3734

OUTPUT TYPE:

Concentration

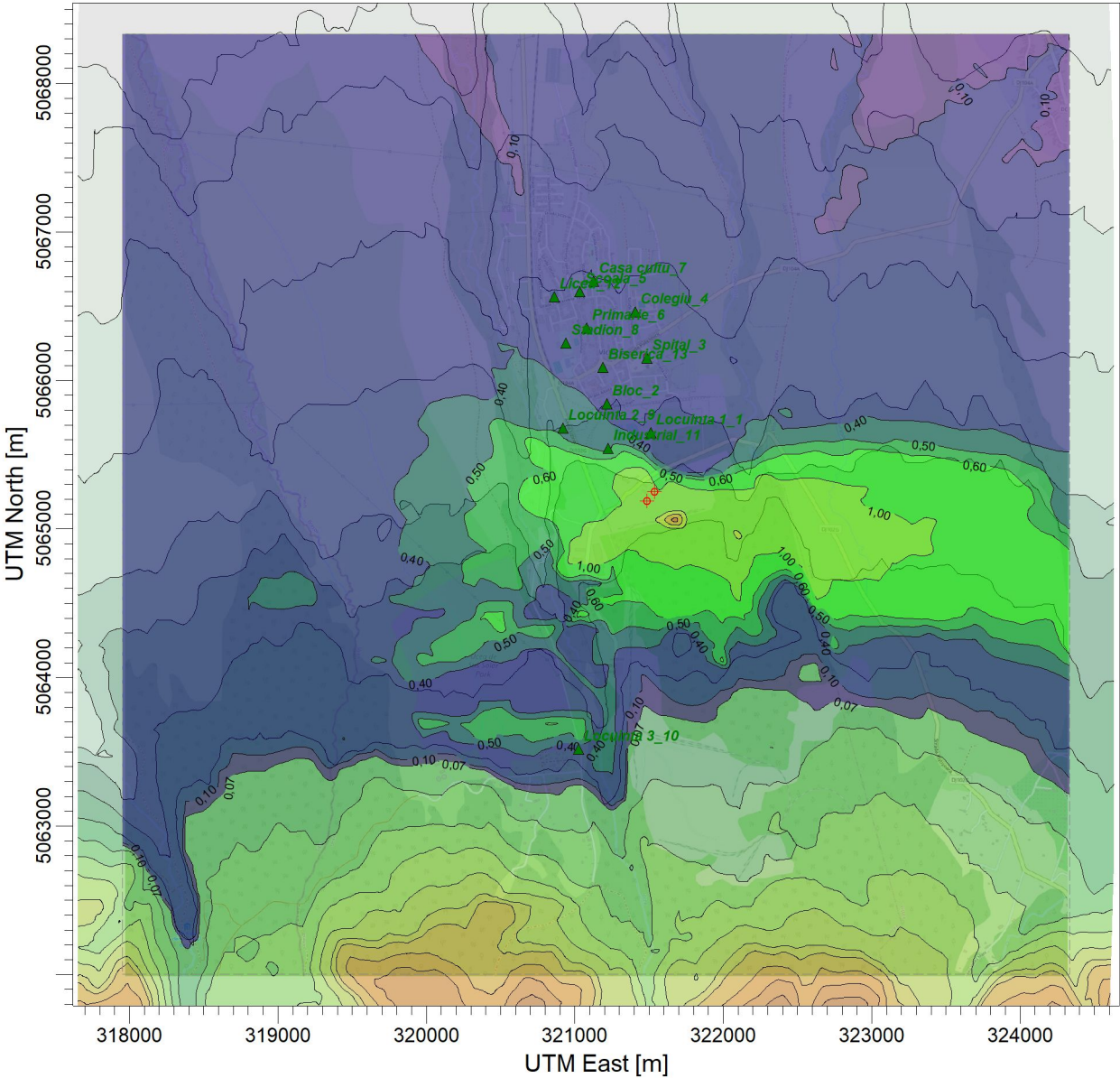
MAX:

6,57 ug/m^3

SCALE:

1:46.000

PROJECT NO.:



PLOT FILE OF 98.00TH PERCENTILE 24-HR VALUES FOR SOURCE GROUP: ALL
Max: 6,57 [ug/m^3] at (321675,50, 5065061,85)

ug/m^3

6,57
6,00
5,00
4,00
1,00
0,60
0,50
0,40
0,10
0,07

0

1 km

1:46.000

PROJECT NO.:

0,07

0,10

0,40

0,50

0,60

1,00

4,00

5,00

6,00

6,57

0,07

0,10

0,40

0,50

0,60

1,00

4,00

5,00

6,00

6,57

0,07

0,10

0,40

0,50

0,60

1,00

4,00

5,00

6,00

6,57

0,07

0,10

0,40

0,50

0,60

1,00

4,00

5,00

6,00

6,57

0,07

0,10

0,40

0,50

0,60

1,00

4,00

5,00

6,00

6,57

0,07

0,10

0,40

0,50

0,60

1,00

4,00

5,00

6,00

6,57

0,07

0,10

0,40

0,50

0,60

1,00

4,00

5,00

6,00

6,57

0,07

0,10

0,40

0,50

0,60

1,00

4,00

5,00

6,00

6,57

0,07

0,10

0,40

0,50

0,60

1,00

4,00

5,00

6,00

6,57

0,07

0,10

0,40

0,50

0,60

1,00

4,00

5,00

6,00

6,57

0,07

0,10

0,40

0,50

0,60

1,00

4,00

5,00

6,00

6,57

0,07

0,10

0,40

0,50

0,60

1,00

4,00

5,00

6,00

6,57

0,07

0,10

0,40

0,50

0,60

1,00

4,00

5,00

6,00

6,57

0,07

0,10

0,40

0,50

0,60

1,00

4,00

5,00

6,00

6,57

0,07

0,10

0,40

0,50

0,60

1,00

4,00

5,00

6,00

6,57

0,07

0,10

0,40

0,50

0,60

1,00

4,00

5,00

6,00

6,57

0,07

0,10

0,40

0,50

0,60

1,00

4,00

5,00

6,00

6,57

0,07

0,10

0,40

0,50

0,60

1,00

4,00

5,00

6,00

6,57

0,07

0,10

0,40

0,50

0,60

1,00

4,00

5,00

6,00

6,57

0,07

0,10

0,40

0,50

0,60

1,00

4,00

5,00

6,00

6,57

0,07

0,10

0,40

0,50

0,60

1,00

4,00

5,00

6,00

6,57

0,07

0,10

0,40

0,50

0,60

1,00

4,00

5,00

6,00

6,57

0,07

0,10

0,40

0,50

0,60

1,00

4,00

5,00

6,00

6,57

0,07

0,10

0,40

0,50

0,60

1,00

4,00

5,00

6,00

6,57

0,07

0,10

0,40

0,50

0,60

1,00

4,00

5,00

6,00

6,57

0,07

0,10

0,40

0,50

0,60

1,00

4,00

5,00

6,00

6,57

0,07

0,10

0,40

0,50

0,60

1,00

4,00

5,00

6,00

6,57

0,07

0,10

0,40

0,50

0,60

1,00

4,00

5,00

6,00

6,57

0,07

0,10

0,40

0,50

0,60

1,00

4,00

5,00

6,00

6,57

0,07

0,10

0,40

0,50

0,60

1,00

4,00

5,00

6,00

6,57

PROJECT TITLE:

Stație de epurare ape uzate industriale rezultate de la fabrica Purolite Victoria și evacuarea acestora în râul Olt
Formaldehida_concentrație 30 min_Calm atmosferic

COMMENTS:

STAS 12574-87
Prag de intervenție:
CMA 30 min = 35 µg/m3
Prag de alertă:
P alertă = 24,5 µg/m3

MODELING OPTIONS:

**CONC, ELEV, AND, LOW_WIND,
RURAL, ALPHA, OPTIONS,
MODELING, USED:, FLAT,**

RECEPTORS:

3734

OUTPUT TYPE:

Concentration

MAX:

0,2366

UNITS:

ug/m^3

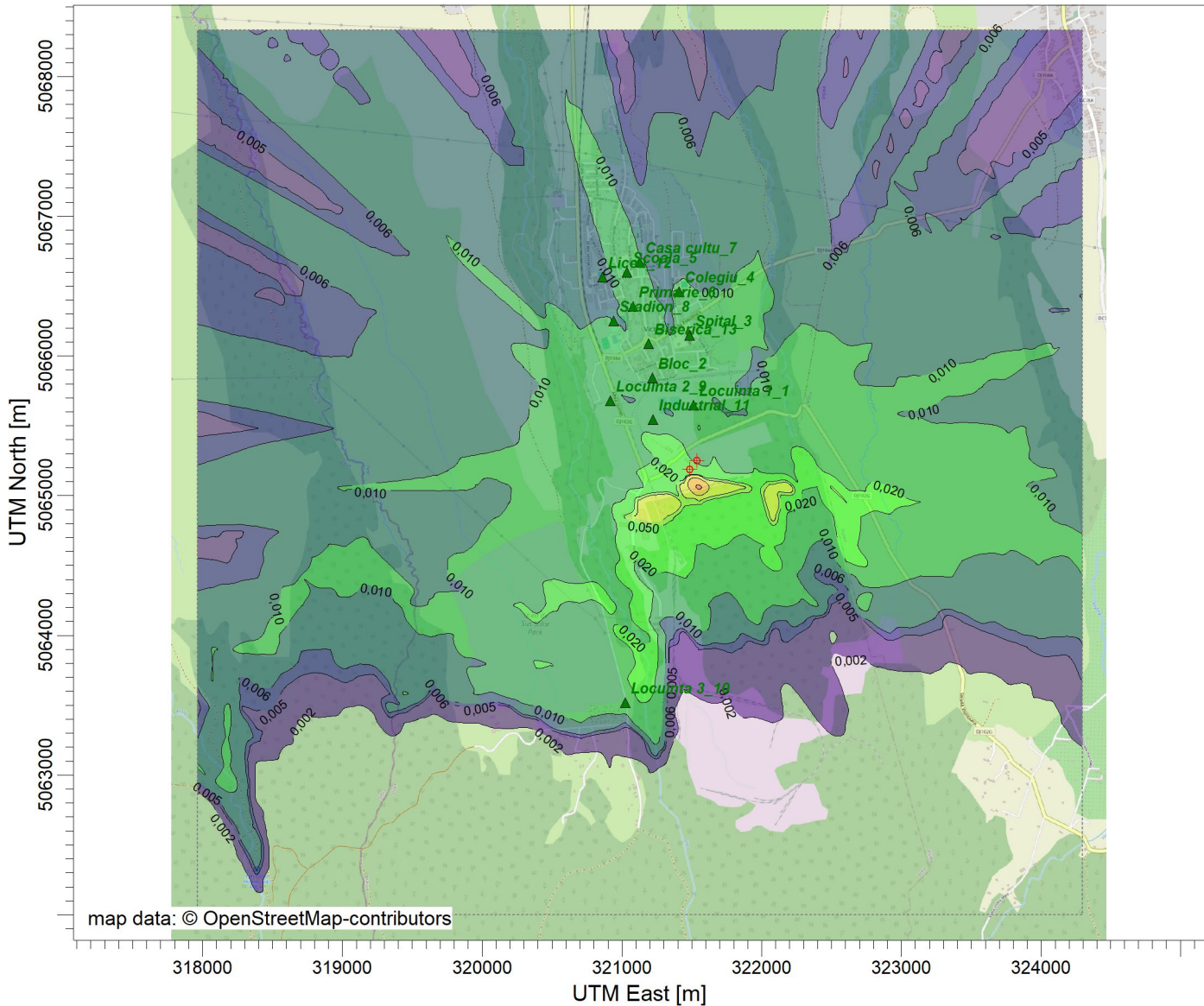
SCALE:

1:46.775

0

1 km

PROJECT NO.:



ug/m^3

PLOT FILE OF HIGH 1ST HIGH 30.0-MIN VALUES FOR SOURCE GROUP: ALL

PROJECT TITLE:

Stație de epurare ape uzate industriale rezultate de la fabrica Purolite Victoria și evacuarea acestora în râul Olt
Formaldehida_concentrație orară_Calm atmosferic

COMMENTS:

STAS 12574-87
Prag de intervenție:
CMA orar = 37,45 µg/m3
Prag de alertă:
P alertă = 26,215 µg/m3

SOURCES:

2

RECEPTORS:

3734

OUTPUT TYPE:

Concentration

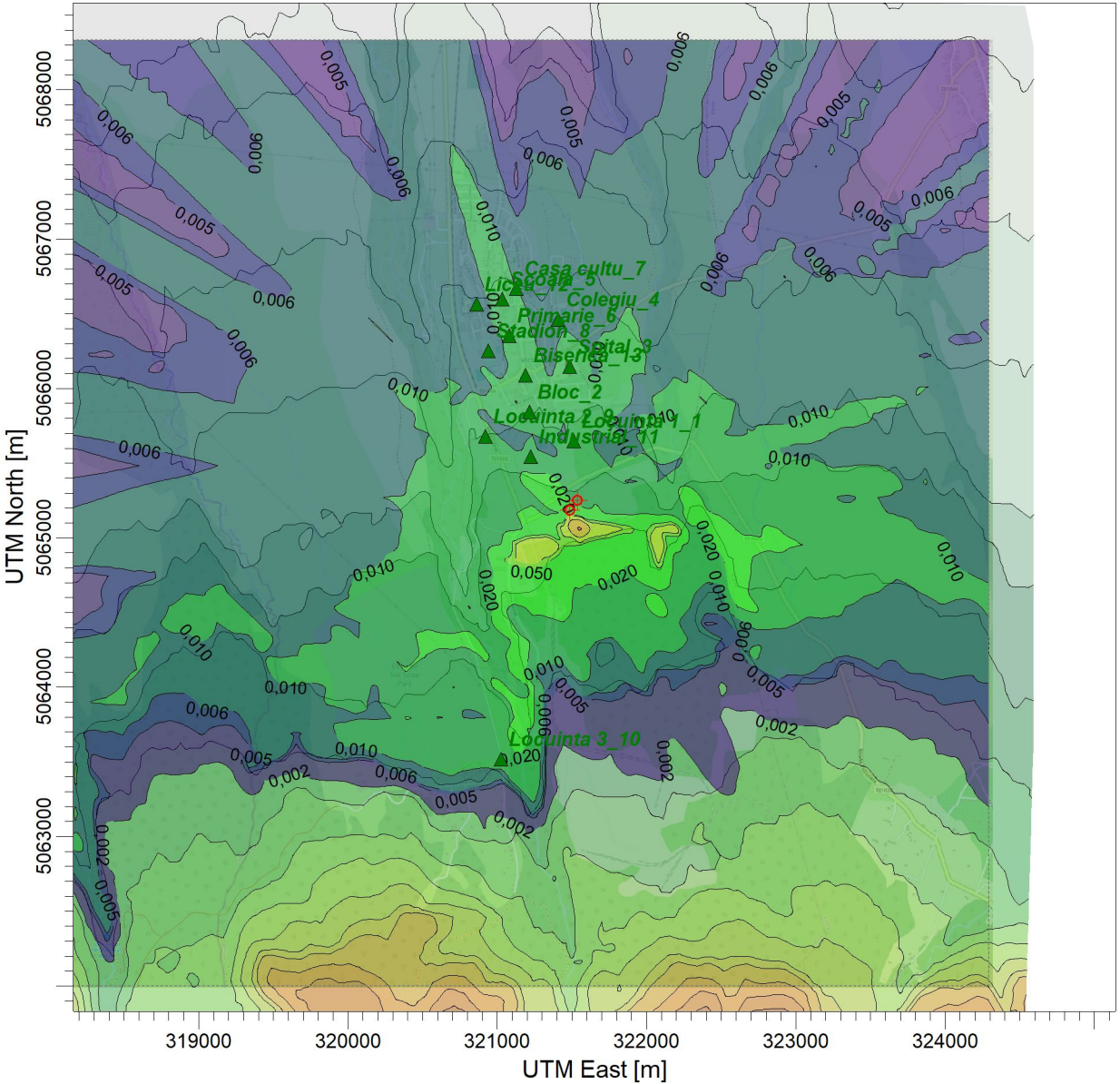
MAX:

0,221 ug/m^3

SCALE:

1:46.000

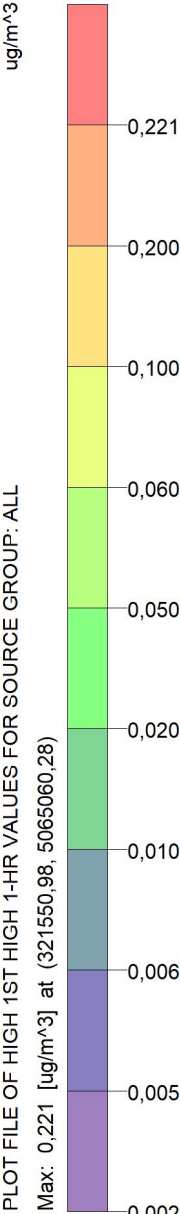
PROJECT NO.:



ug/m^3

PLOT FILE OF HIGH 1ST HIGH 1-HR VALUES FOR SOURCE GROUP: ALL

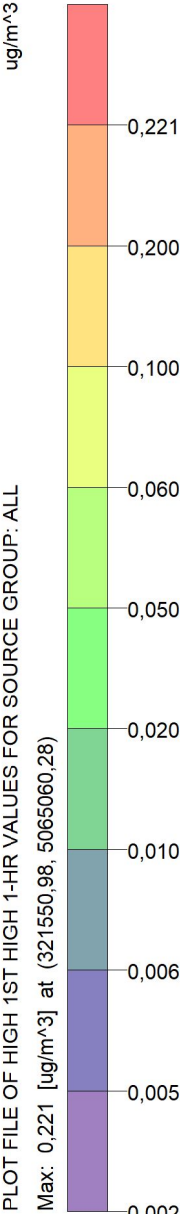
Max: 0,221 [ug/m^3] at (321550,98, 5065060,28)



ug/m^3

PLOT FILE OF HIGH 1ST HIGH 1-HR VALUES FOR SOURCE GROUP: ALL

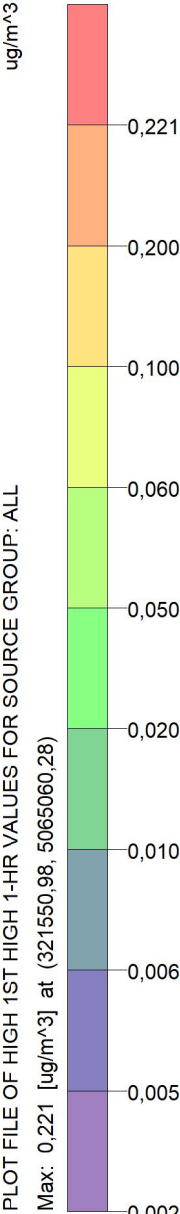
Max: 0,221 [ug/m^3] at (321550,98, 5065060,28)



ug/m^3

PLOT FILE OF HIGH 1ST HIGH 1-HR VALUES FOR SOURCE GROUP: ALL

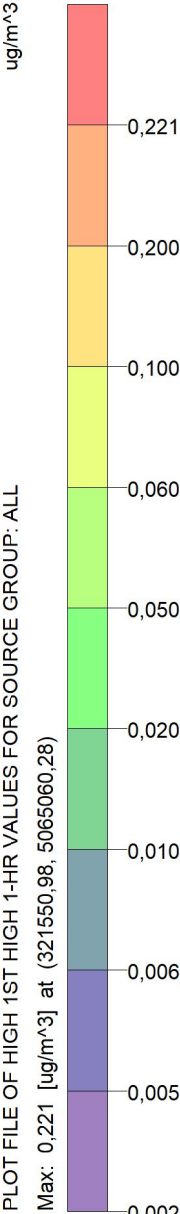
Max: 0,221 [ug/m^3] at (321550,98, 5065060,28)



ug/m^3

PLOT FILE OF HIGH 1ST HIGH 1-HR VALUES FOR SOURCE GROUP: ALL

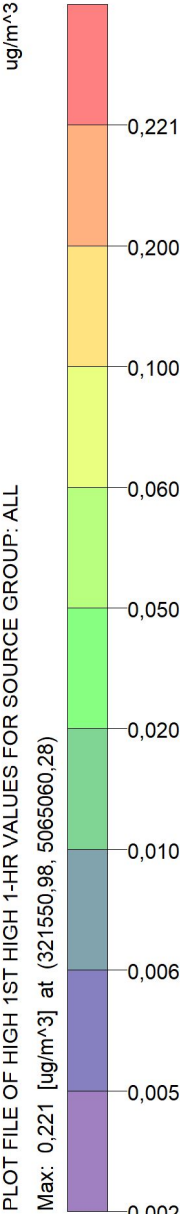
Max: 0,221 [ug/m^3] at (321550,98, 5065060,28)



ug/m^3

PLOT FILE OF HIGH 1ST HIGH 1-HR VALUES FOR SOURCE GROUP: ALL

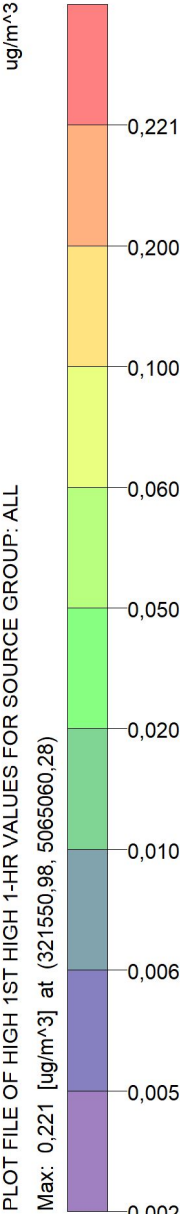
Max: 0,221 [ug/m^3] at (321550,98, 5065060,28)



ug/m^3

PLOT FILE OF HIGH 1ST HIGH 1-HR VALUES FOR SOURCE GROUP: ALL

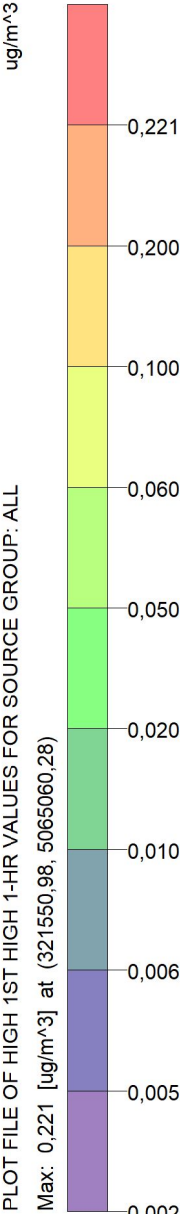
Max: 0,221 [ug/m^3] at (321550,98, 5065060,28)



ug/m^3

PLOT FILE OF HIGH 1ST HIGH 1-HR VALUES FOR SOURCE GROUP: ALL

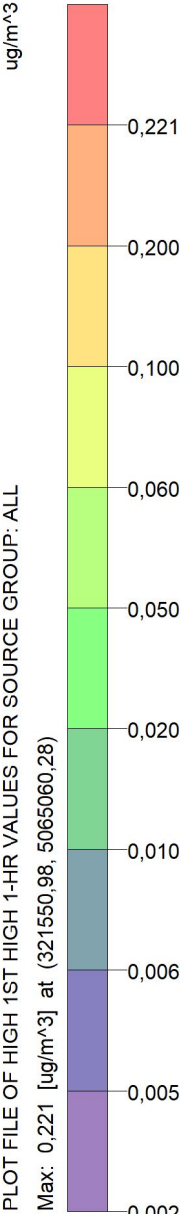
Max: 0,221 [ug/m^3] at (321550,98, 5065060,28)



ug/m^3

PLOT FILE OF HIGH 1ST HIGH 1-HR VALUES FOR SOURCE GROUP: ALL

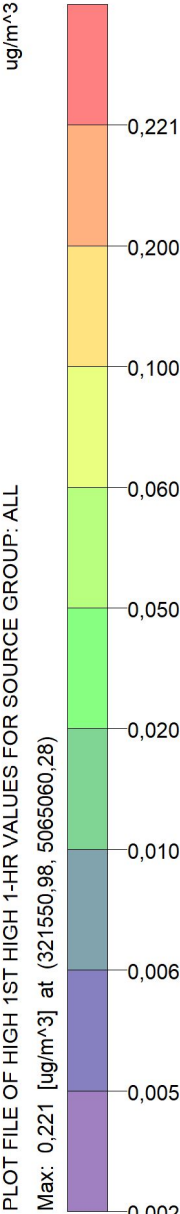
Max: 0,221 [ug/m^3] at (321550,98, 5065060,28)



ug/m^3

PLOT FILE OF HIGH 1ST HIGH 1-HR VALUES FOR SOURCE GROUP: ALL

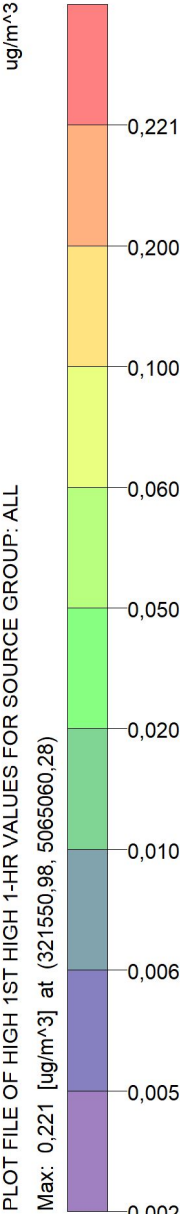
Max: 0,221 [ug/m^3] at (321550,98, 5065060,28)



ug/m^3

PLOT FILE OF HIGH 1ST HIGH 1-HR VALUES FOR SOURCE GROUP: ALL

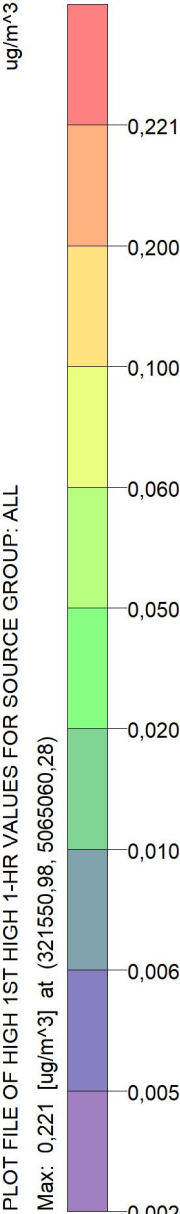
Max: 0,221 [ug/m^3] at (321550,98, 5065060,28)



ug/m^3

PLOT FILE OF HIGH 1ST HIGH 1-HR VALUES FOR SOURCE GROUP: ALL

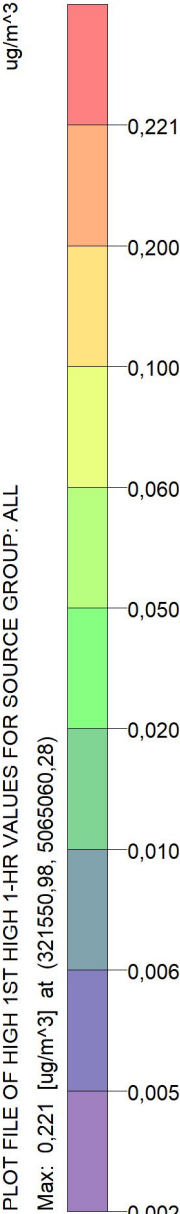
Max: 0,221 [ug/m^3] at (321550,98, 5065060,28)



ug/m^3

PLOT FILE OF HIGH 1ST HIGH 1-HR VALUES FOR SOURCE GROUP: ALL

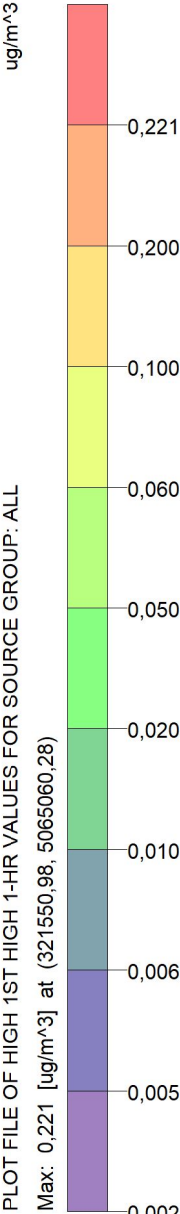
Max: 0,221 [ug/m^3] at (321550,98, 5065060,28)



ug/m^3

PLOT FILE OF HIGH 1ST HIGH 1-HR VALUES FOR SOURCE GROUP: ALL

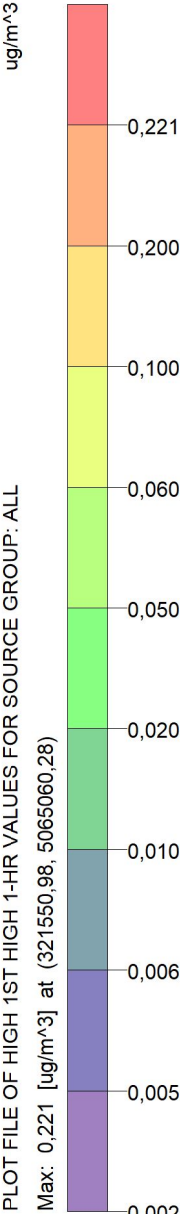
Max: 0,221 [ug/m^3] at (321550,98, 5065060,28)



ug/m^3

PLOT FILE OF HIGH 1ST HIGH 1-HR VALUES FOR SOURCE GROUP: ALL

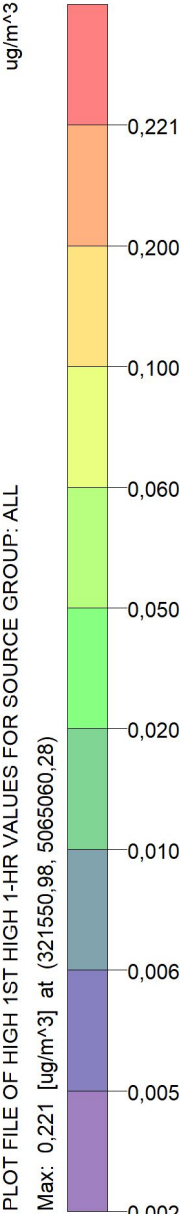
Max: 0,221 [ug/m^3] at (321550,98, 5065060,28)



ug/m^3

PLOT FILE OF HIGH 1ST HIGH 1-HR VALUES FOR SOURCE GROUP: ALL

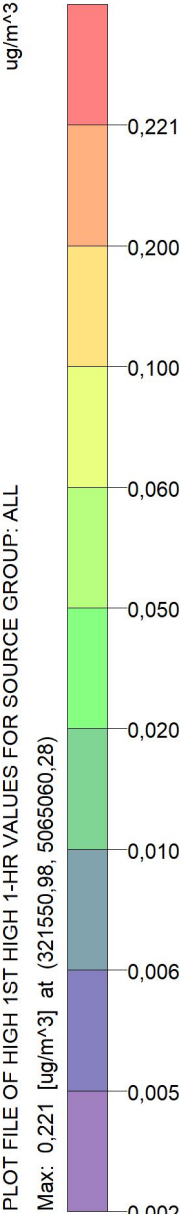
Max: 0,221 [ug/m^3] at (321550,98, 5065060,28)



ug/m^3

PLOT FILE OF HIGH 1ST HIGH 1-HR VALUES FOR SOURCE GROUP: ALL

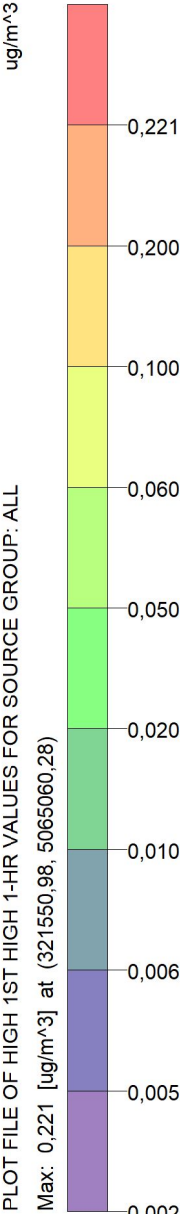
Max: 0,221 [ug/m^3] at (321550,98, 5065060,28)



ug/m^3

PLOT FILE OF HIGH 1ST HIGH 1-HR VALUES FOR SOURCE GROUP: ALL

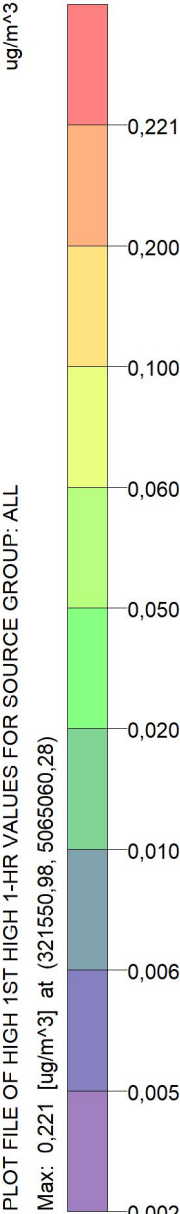
Max: 0,221 [ug/m^3] at (321550,98, 5065060,28)



ug/m^3

PLOT FILE OF HIGH 1ST HIGH 1-HR VALUES FOR SOURCE GROUP: ALL

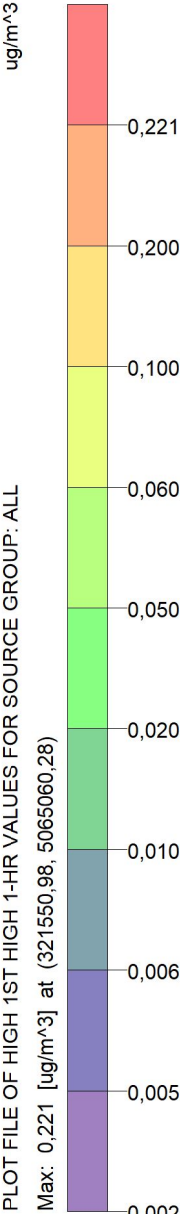
Max: 0,221 [ug/m^3] at (321550,98, 5065060,28)



ug/m^3

PLOT FILE OF HIGH 1ST HIGH 1-HR VALUES FOR SOURCE GROUP: ALL

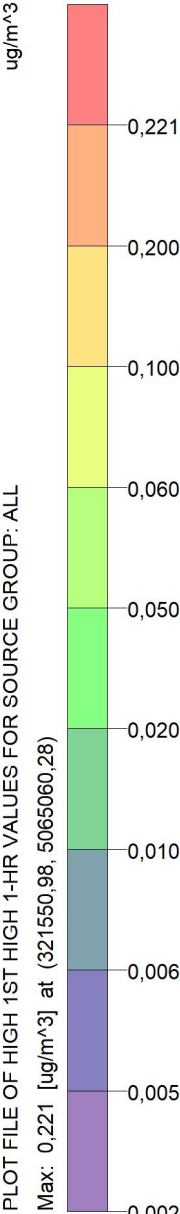
Max: 0,221 [ug/m^3] at (321550,98, 5065060,28)



ug/m^3

PLOT FILE OF HIGH 1ST HIGH 1-HR VALUES FOR SOURCE GROUP: ALL

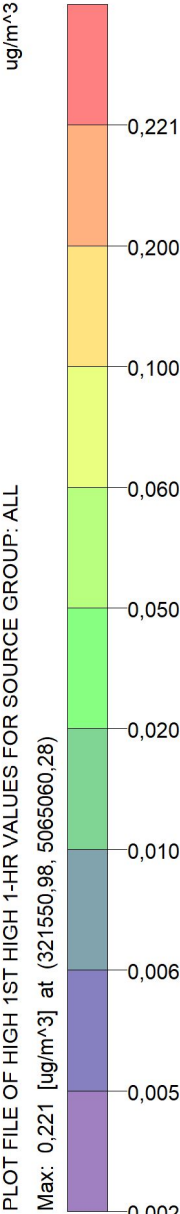
Max: 0,221 [ug/m^3] at (321550,98, 5065060,28)



ug/m^3

PLOT FILE OF HIGH 1ST HIGH 1-HR VALUES FOR SOURCE GROUP: ALL

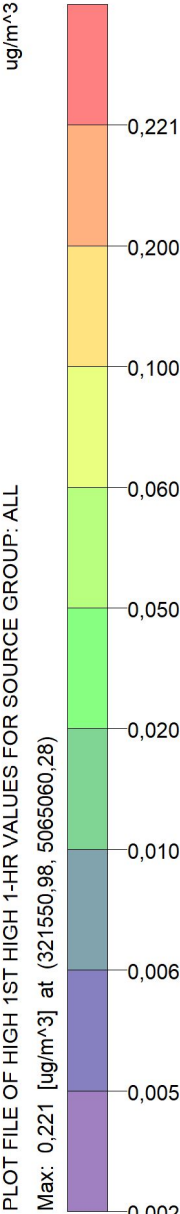
Max: 0,221 [ug/m^3] at (321550,98, 5065060,28)



ug/m^3

PLOT FILE OF HIGH 1ST HIGH 1-HR VALUES FOR SOURCE GROUP: ALL

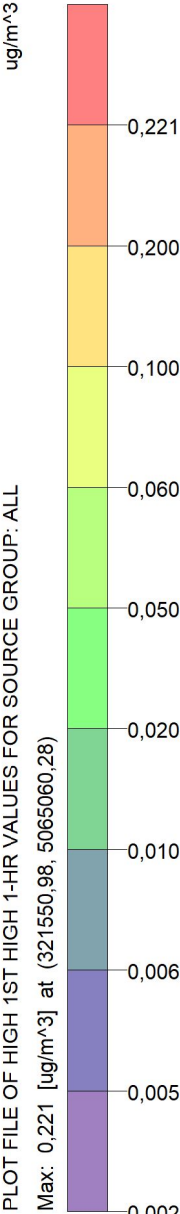
Max: 0,221 [ug/m^3] at (321550,98, 5065060,28)



ug/m^3

PLOT FILE OF HIGH 1ST HIGH 1-HR VALUES FOR SOURCE GROUP: ALL

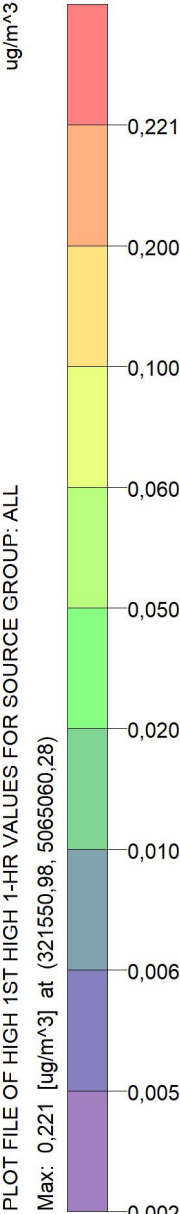
Max: 0,221 [ug/m^3] at (321550,98, 5065060,28)



ug/m^3

PLOT FILE OF HIGH 1ST HIGH 1-HR VALUES FOR SOURCE GROUP: ALL

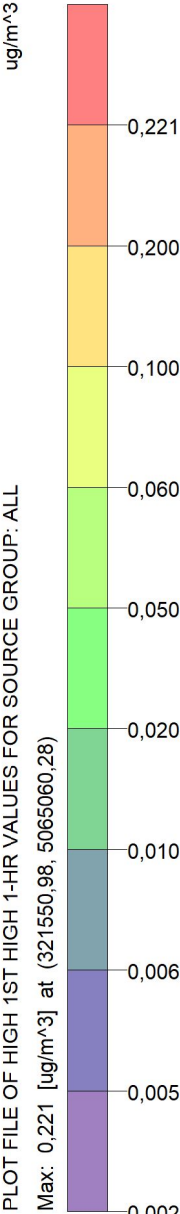
Max: 0,221 [ug/m^3] at (321550,98, 5065060,28)



ug/m^3

PLOT FILE OF HIGH 1ST HIGH 1-HR VALUES FOR SOURCE GROUP: ALL

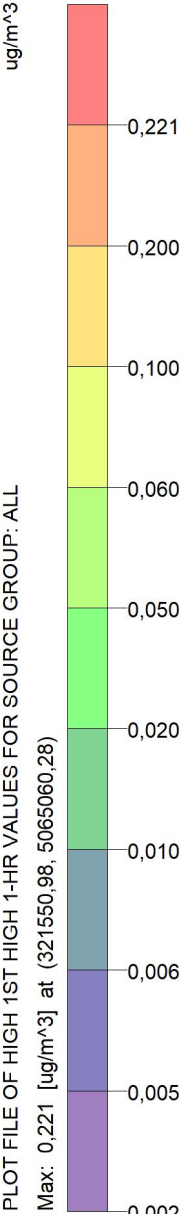
Max: 0,221 [ug/m^3] at (321550,98, 5065060,28)



ug/m^3

PLOT FILE OF HIGH 1ST HIGH 1-HR VALUES FOR SOURCE GROUP: ALL

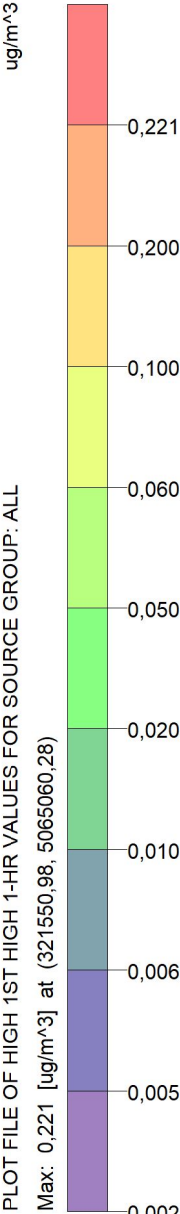
Max: 0,221 [ug/m^3] at (321550,98, 5065060,28)



ug/m^3

PLOT FILE OF HIGH 1ST HIGH 1-HR VALUES FOR SOURCE GROUP: ALL

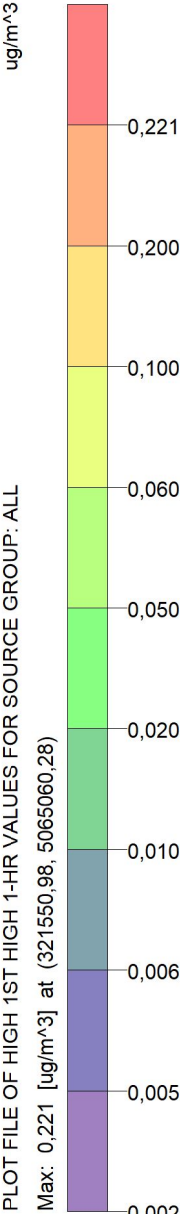
Max: 0,221 [ug/m^3] at (321550,98, 5065060,28)



ug/m^3

PLOT FILE OF HIGH 1ST HIGH 1-HR VALUES FOR SOURCE GROUP: ALL

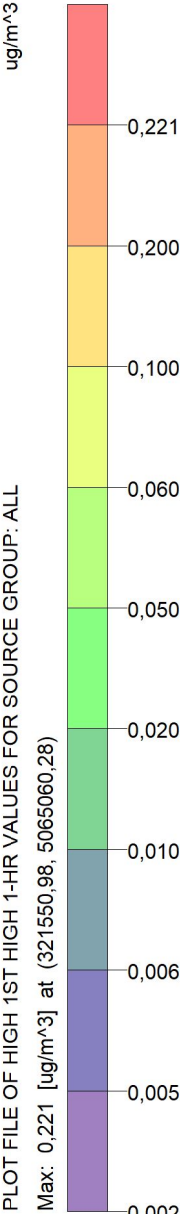
Max: 0,221 [ug/m^3] at (321550,98, 5065060,28)



ug/m^3

PLOT FILE OF HIGH 1ST HIGH 1-HR VALUES FOR SOURCE GROUP: ALL

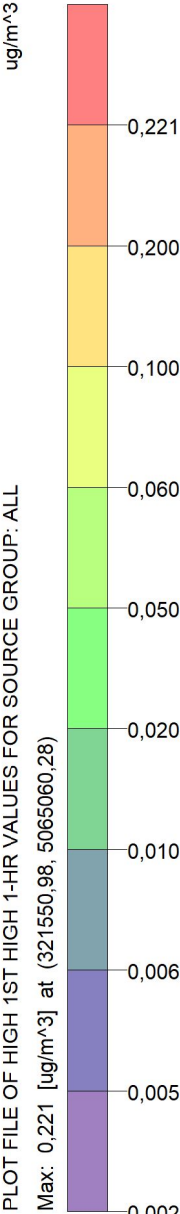
Max: 0,221 [ug/m^3] at (321550,98, 5065060,28)



ug/m^3

PLOT FILE OF HIGH 1ST HIGH 1-HR VALUES FOR SOURCE GROUP: ALL

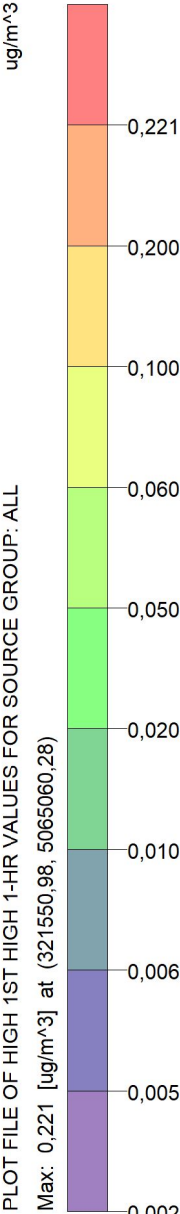
Max: 0,221 [ug/m^3] at (321550,98, 5065060,28)



ug/m^3

PLOT FILE OF HIGH 1ST HIGH 1-HR VALUES FOR SOURCE GROUP: ALL

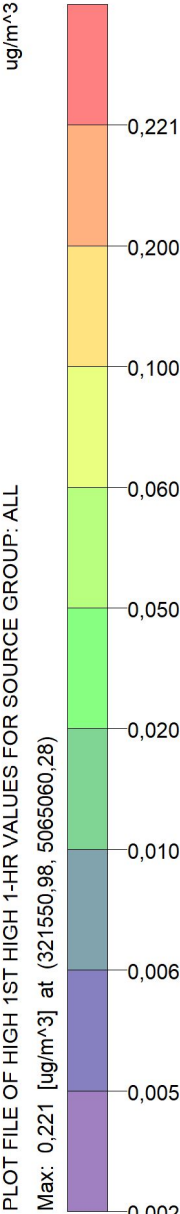
Max: 0,221 [ug/m^3] at (321550,98, 5065060,28)



ug/m^3

PLOT FILE OF HIGH 1ST HIGH 1-HR VALUES FOR SOURCE GROUP: ALL

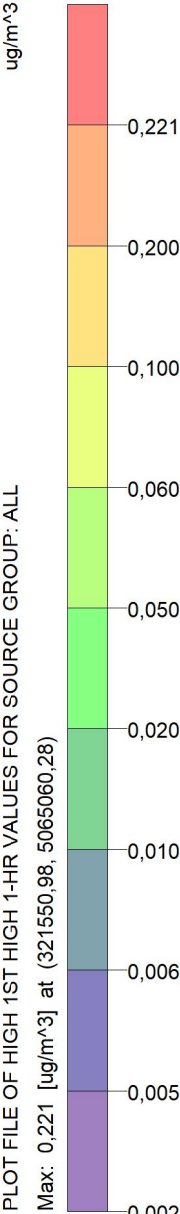
Max: 0,221 [ug/m^3] at (321550,98, 5065060,28)



ug/m^3

PLOT FILE OF HIGH 1ST HIGH 1-HR VALUES FOR SOURCE GROUP: ALL

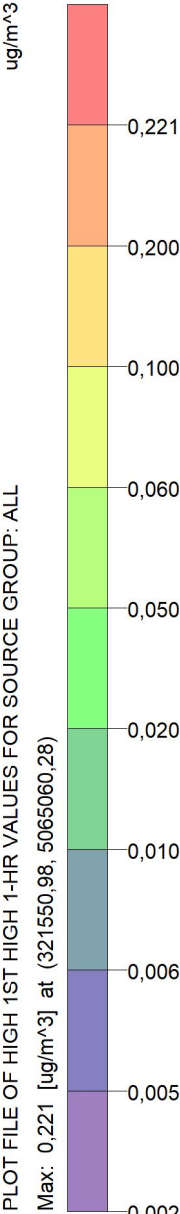
Max: 0,221 [ug/m^3] at (321550,98, 5065060,28)



ug/m^3

PLOT FILE OF HIGH 1ST HIGH 1-HR VALUES FOR SOURCE GROUP: ALL

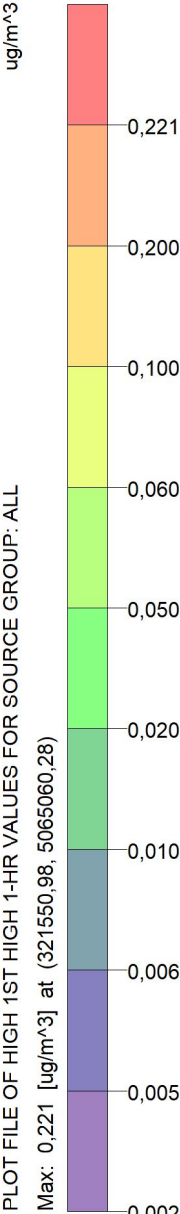
Max: 0,221 [ug/m^3] at (321550,98, 5065060,28)



ug/m^3

PLOT FILE OF HIGH 1ST HIGH 1-HR VALUES FOR SOURCE GROUP: ALL

Max: 0,221 [ug/m^3] at (321550,98, 5065060,28)



Stație de epurare ape uzate industriale rezultate de la fabrica Purolite Victoria și evacuarea acestora în râul Olt

STAS 12574-87
Prag de intervenție:
CMA zilnic = 12 µg/m3
Prag de alertă:
P alertă = 8,4 µg/m3

2

3734

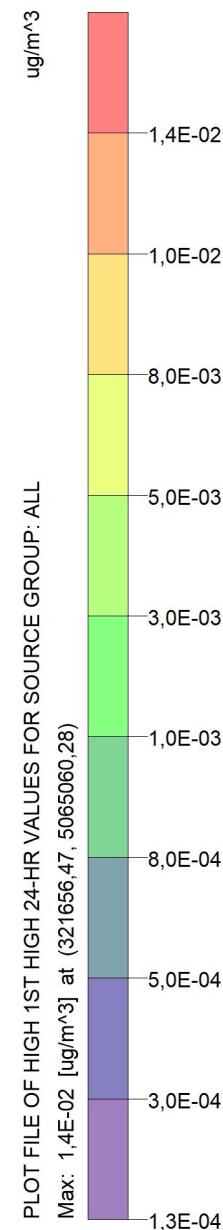
Concentration

MAX:
1,4E-02 ug/m^3

SCALE: 1:46.000

A horizontal scale bar with a black background and white markings. It is labeled '0' at the left end and '1 km' at the right end. The bar is divided into four equal segments by three white vertical lines.

PROJECT NO.:



PROJECT TITLE:

Stație de epurare ape uzate industriale rezultate de la fabrica Purolite Victoria și evacuarea acestora în râul Olt
Formaldehida_concentrație 30min_Percentila 98_Calm atmosferic

COMMENTS:

STAS 12574-87
Prag de intervenție:
CMA 30 min = 35 µg/m³
Prag de alertă:
P alertă = 24,5 µg/m³

MODELING OPTIONS:

CONC, ELEV, USED:, MODELING,
NONFAULT, FLAT, OPTIONS,
LOW_WIND, AND, ALPHA, RURAL

RECEPTORS:

3734

OUTPUT TYPE:

Concentration

MAX:

0,01051

UNITS:

ug/m^3

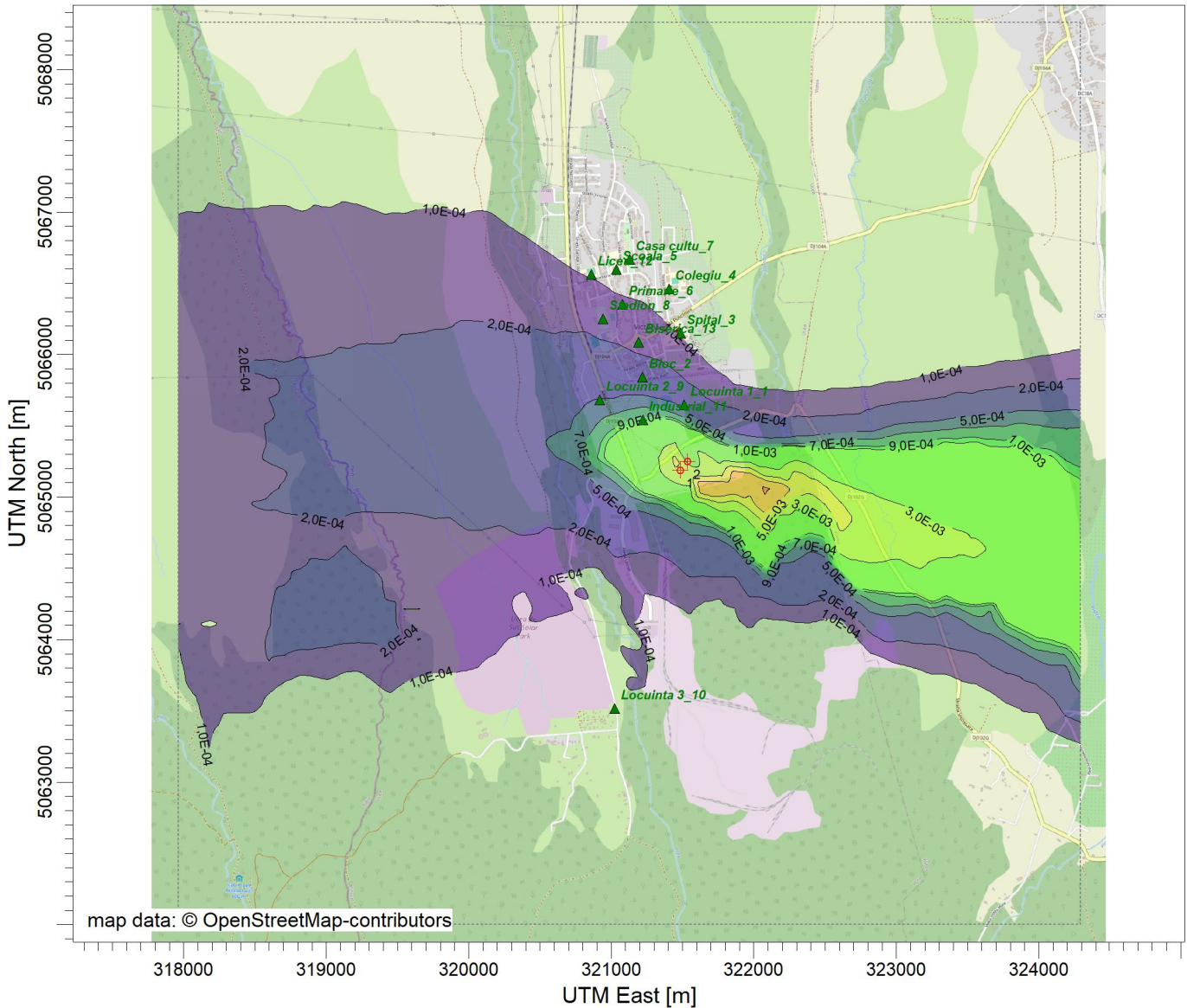
SCALE:

1:46.000

0

1 km

PROJECT NO.:



ug/m^3

PLOT FILE OF 98.00TH PERCENTILE 30.0-MIN VALUES FOR SOURCE GROUP: ALL

1,1E-02

1,0E-02

7,0E-03

5,0E-03

3,0E-03

1,0E-03

9,0E-04

7,0E-04

5,0E-04

2,0E-04

1,0E-04

PROJECT TITLE:

Stație de epurare ape uzate industriale rezultate de la fabrica Purolite Victoria și evacuarea acestora în râul Olt
Formaldehida_concentrație orară_Percentila 98_Calm atmosferic

COMMENTS:

STAS 12574-87
Prag de intervenție:
CMA orar = 37,45 µg/m3
Prag de alertă:
P alertă = 26,215 µg/m3

SOURCES:

2

RECEPTORS:

3734

OUTPUT TYPE:

Concentration

MAX:

9,8E-03 ug/m^3

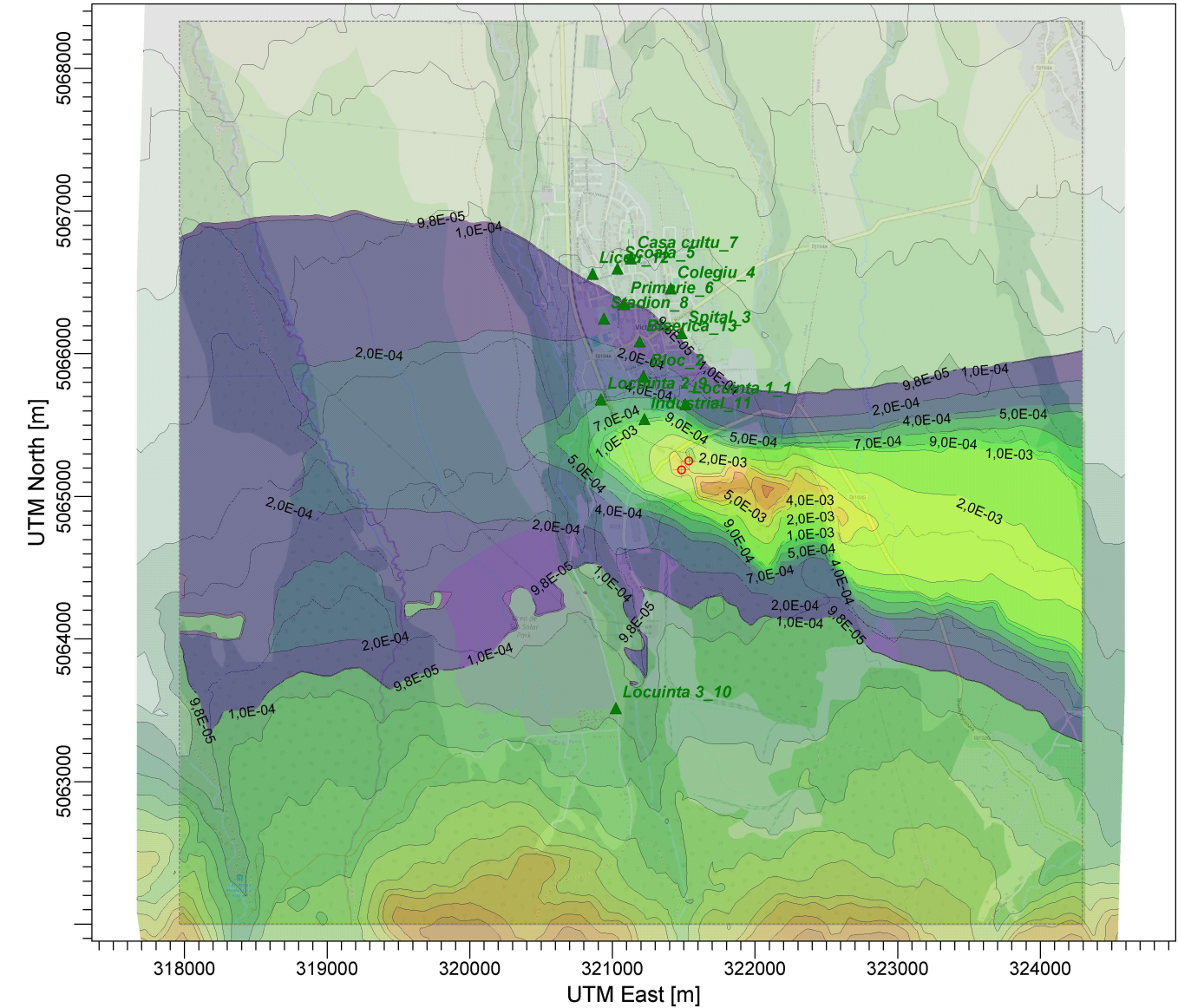
SCALE:

1:46.000

0

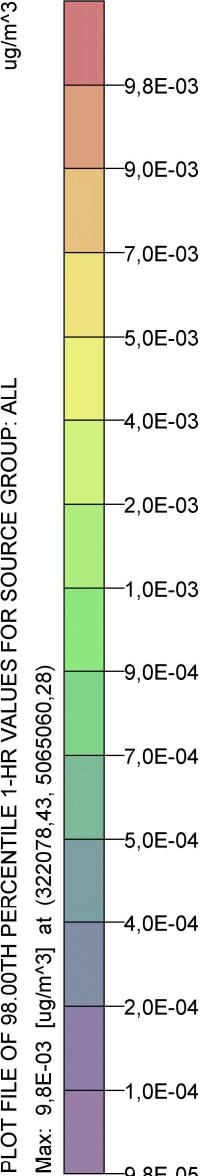
1 km

PROJECT NO.:



ug/m^3

PLOT FILE OF 98.00TH PERCENTILE 1-HR VALUES FOR SOURCE GROUP: ALL
Max: 9,8E-03 [ug/m^3] at (322078,43, 5065060,28)



PROJECT TITLE:

Stație de epurare ape uzate industriale rezultate de la fabrica Purolite Victoria și evacuarea acestora în râul Olt
Formaldehida_ppm_Calm atmosferic

COMMENTS:

Limită miros
CMA = 0,50 ppm

MODELING OPTIONS:

CONC, ELEV, AND, LOW_WIND,
RURAL, ALPHA, OPTIONS,
MODELING, USED:, FLAT,

RECEPTORS:

3734

OUTPUT TYPE:

Concentration

MAX:

0,0001797

UNITS:

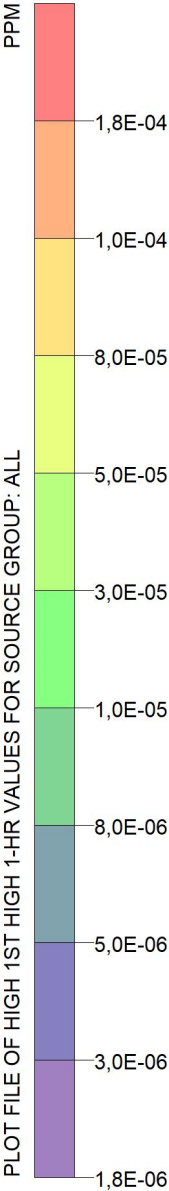
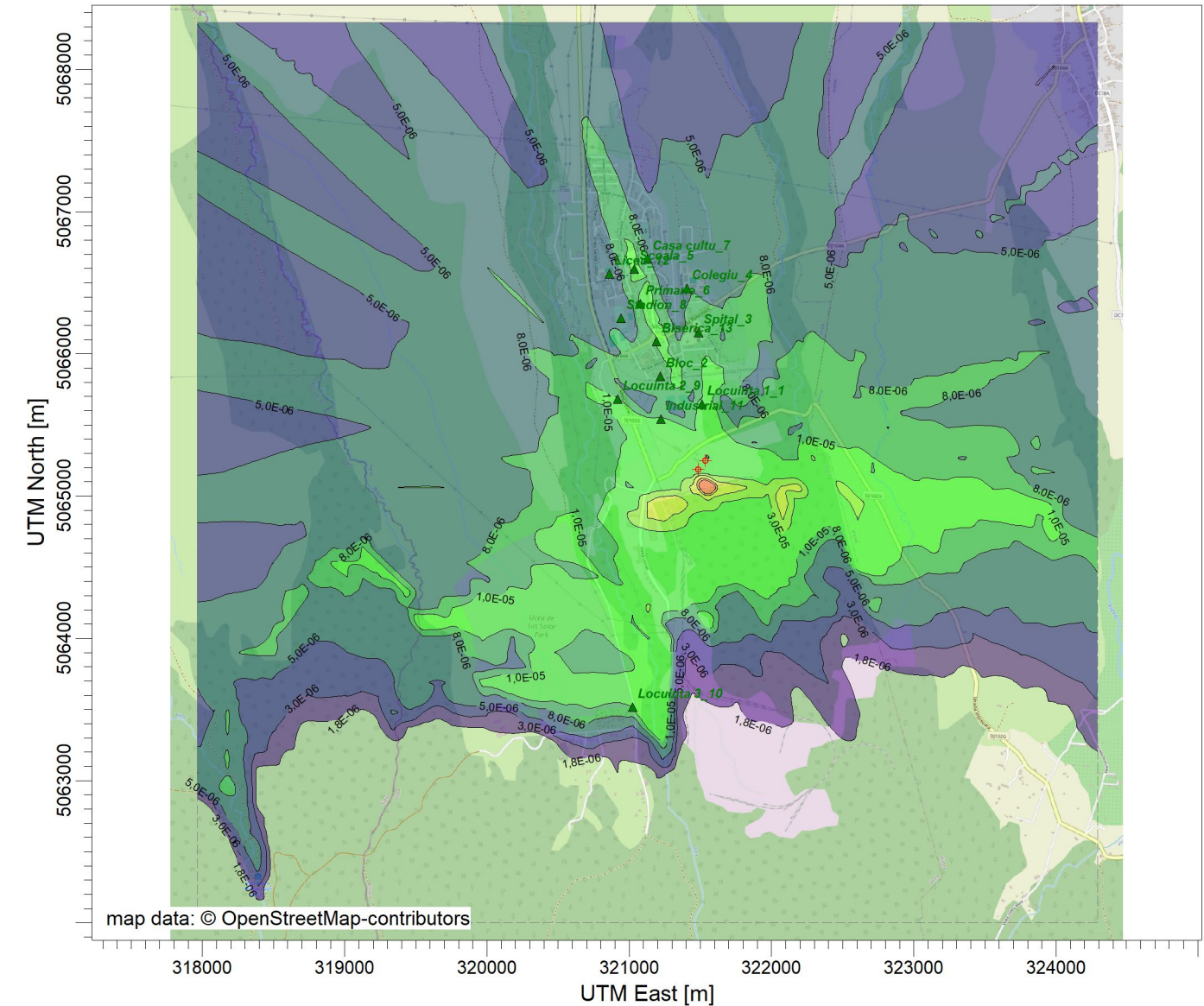
PPM

SCALE:

1:46.000

0 1 km

PROJECT NO.:



PROJECT TITLE:

Stație de epurare ape uzate industriale rezultate de la fabrica Purolite Victoria și evacuarea acestora în râul Olt
Formaldehida_Concentrație zilnic_Percentila 98_Calm atmosferic

COMMENTS:

STAS 12574-87
Prag de intervenție:
CMA zilnic = 12 $\mu\text{g}/\text{m}^3$
Prag de alertă:
P alertă = 8,4 $\mu\text{g}/\text{m}^3$

SOURCES:

2

RECEPTORS:

3734

OUTPUT TYPE:

Concentration

MAX:

5,1E-03 $\mu\text{g}/\text{m}^3$

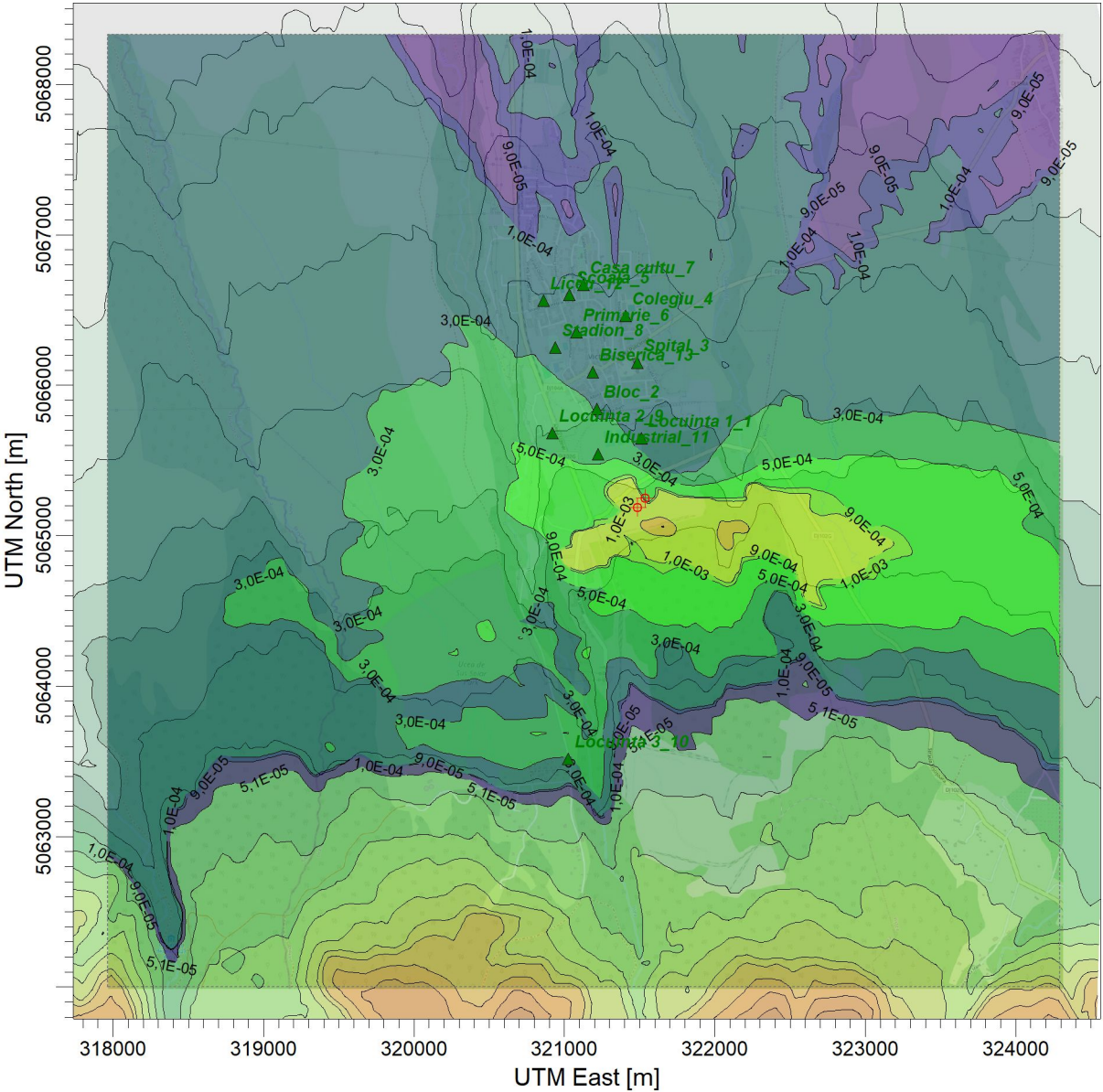
SCALE:

1:46.000

0

1 km

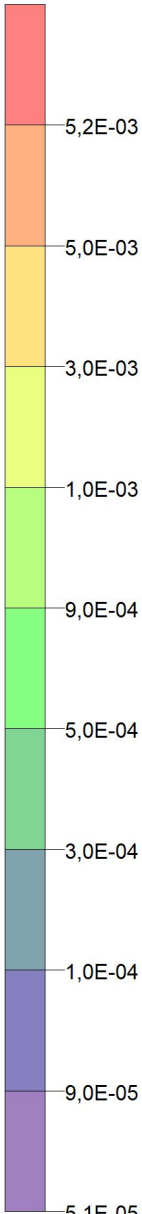
PROJECT NO.:



$\mu\text{g}/\text{m}^3$

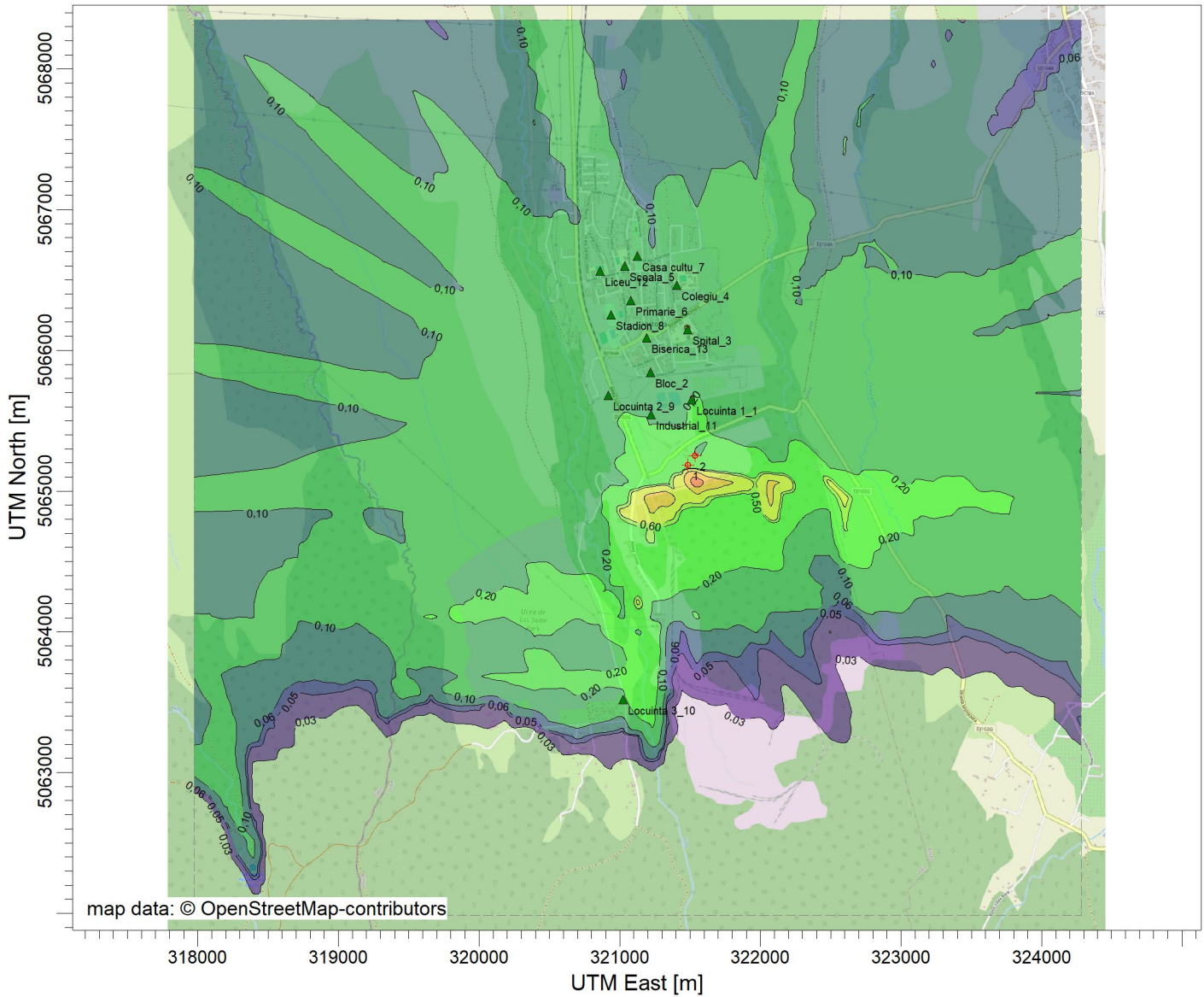
PLOT FILE OF 98.00TH PERCENTILE 24-HR VALUES FOR SOURCE GROUP: ALL

Max: 5,1E-03 [$\mu\text{g}/\text{m}^3$] at (321656,47, 5065060,28)



PROJECT TITLE:

Stație de epurare ape uzate industriale rezultate de la fabrica Purolite Victoria și evacuarea acestora în râul Olt
Amoniac_Concentrație 30min_Calm atmosferic



ug/m³

PLOT FILE OF HIGH 1ST HIGH 30,0-MIN VALUES FOR SOURCE GROUP: ALL

COMMENTS:

STAS 12574-87
Prag de intervenție:
CMA 30 min = 300 ug/m³
Prag de alertă:
P alertă = 210 ug/m³

MODELING OPTIONS:

CONC, ELEV, AND, LOW_WIND,
RURAL, ALPHA, OPTIONS,
MODELING, USED:, FLAT,

RECEPTORS:

3734

OUTPUT TYPE:

Concentration

MAX:

2,9251

UNITS:

ug/m³

SCALE:

1:46.000

0

1 km

PROJECT NO.:

PROJECT TITLE:

Stație de epurare ape uzate industriale rezultate de la fabrica Purolite Victoria și evacuarea acestora în râul Olt
Amoniac_Concentrație 30min_Percentila 98_Calm atmosferic

COMMENTS:

STAS 12574-87
Prag de intervenție:
CMA 30 min = 300 µg/m³
Prag de alertă:
P alertă = 210 µg/m³

MODELING OPTIONS:

CONC, ELEV, USED:, MODELING,
NONFAULT, FLAT, OPTIONS,
LOW_WIND, AND, ALPHA, RURAL

RECEPTORS:

3734

OUTPUT TYPE:

Concentration

MAX:

0,1459

UNITS:

ug/m^3

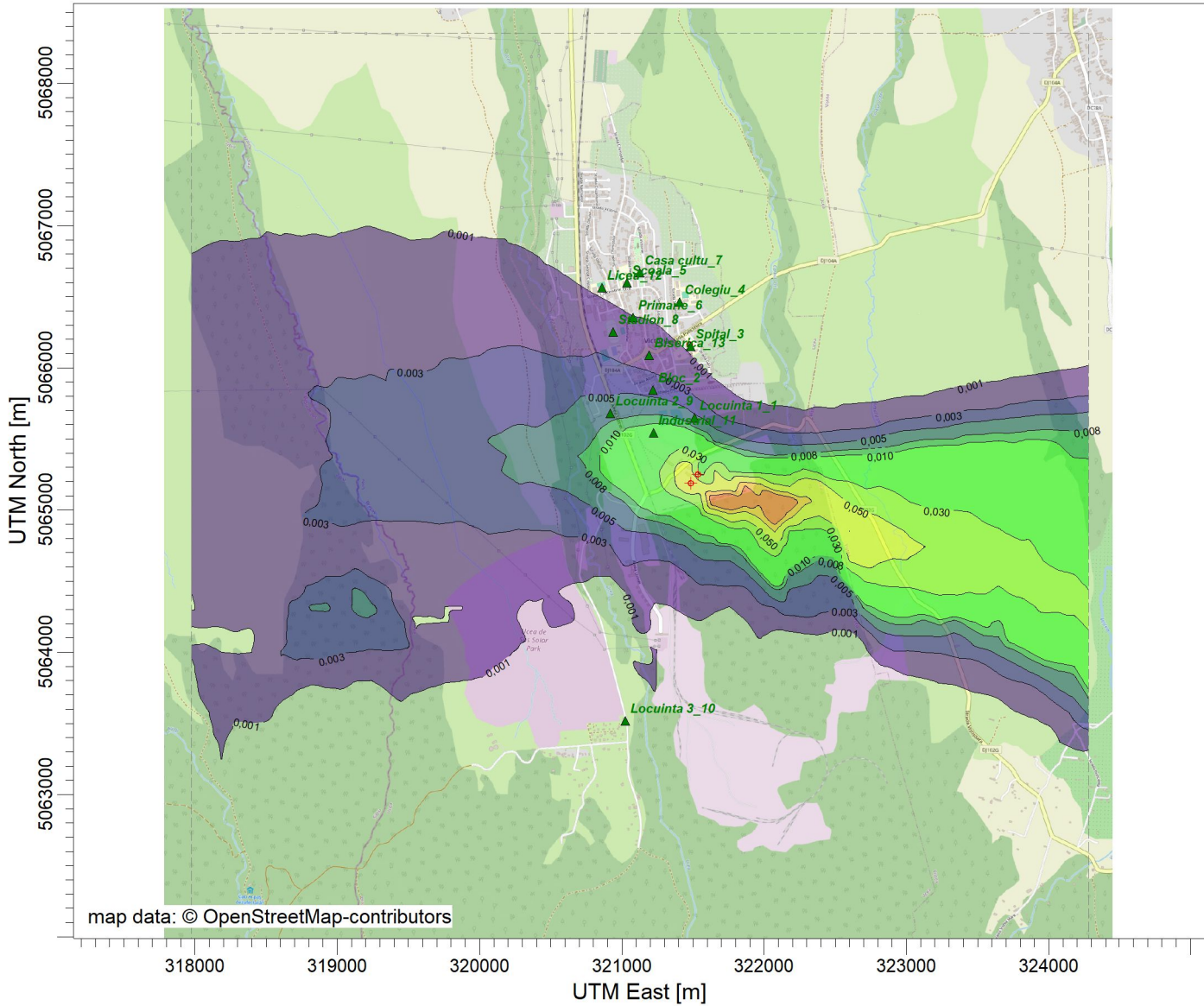
SCALE:

1:46.000

0

1 km

PROJECT NO.:



ug/m^3

PLOT FILE OF 98.00TH PERCENTILE 30.0-MIN VALUES FOR SOURCE GROUP: ALL

PROJECT TITLE:

Stație de epurare ape uzate industriale rezultate de la fabrica Purolite Victoria și evacuarea acestora în râul Olteț
Amoniac Concentrație orară Calm atmosferic

COMMENTS:

STAS 12574-87
Prag de intervenție:
CMA orar = 321 $\mu\text{g}/\text{m}^3$
Prag de alertă:
P alertă = 224,7 $\mu\text{g}/\text{m}^3$

SOURCES:

2

RECEPTORS:

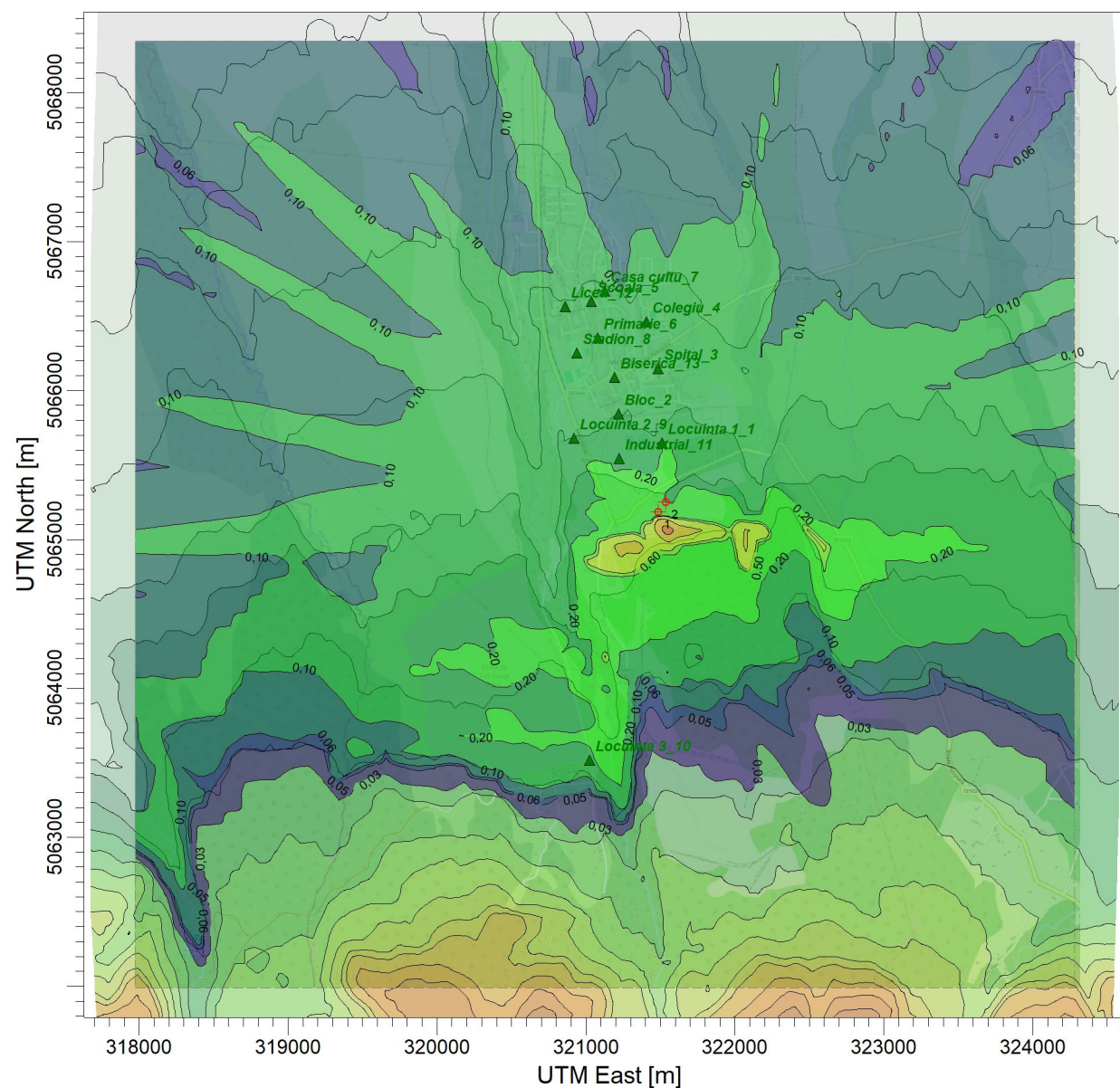
3734

OUTPUT TYPE:

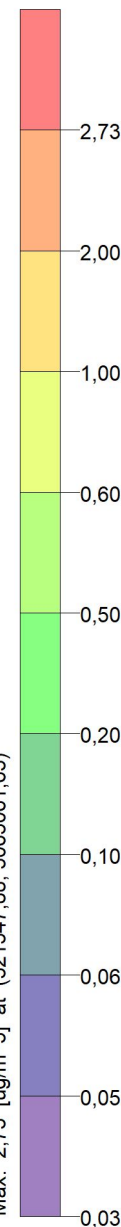
Concentration

MAX:

2,73 ug/m³



PLOT FILE OF HIGH 1ST HIGH 1-HR VALUES FOR SOURCE GROUP: ALL
Max: 2,73 [ug/m^3] at (321547,88, 5065061,63)



SCALE: 1:46.000



PROJECT NO.:

PROJECT TITLE:

Stație de epurare ape uzate industriale rezultate de la fabrica Purolite Victoria și evacuarea acestora în râul Olt
Amoniac_Concentrație orară_Percentila 98_Calm atmosferic

COMMENTS:

STAS 12574-87
Prag de intervenție:
CMA orar = 321 $\mu\text{g}/\text{m}^3$
Prag de alertă:
P alertă = 224,7 $\mu\text{g}/\text{m}^3$

SOURCES:

2

RECEPTORS:

3734

OUTPUT TYPE:

Concentration

MAX:

0,136 $\mu\text{g}/\text{m}^3$

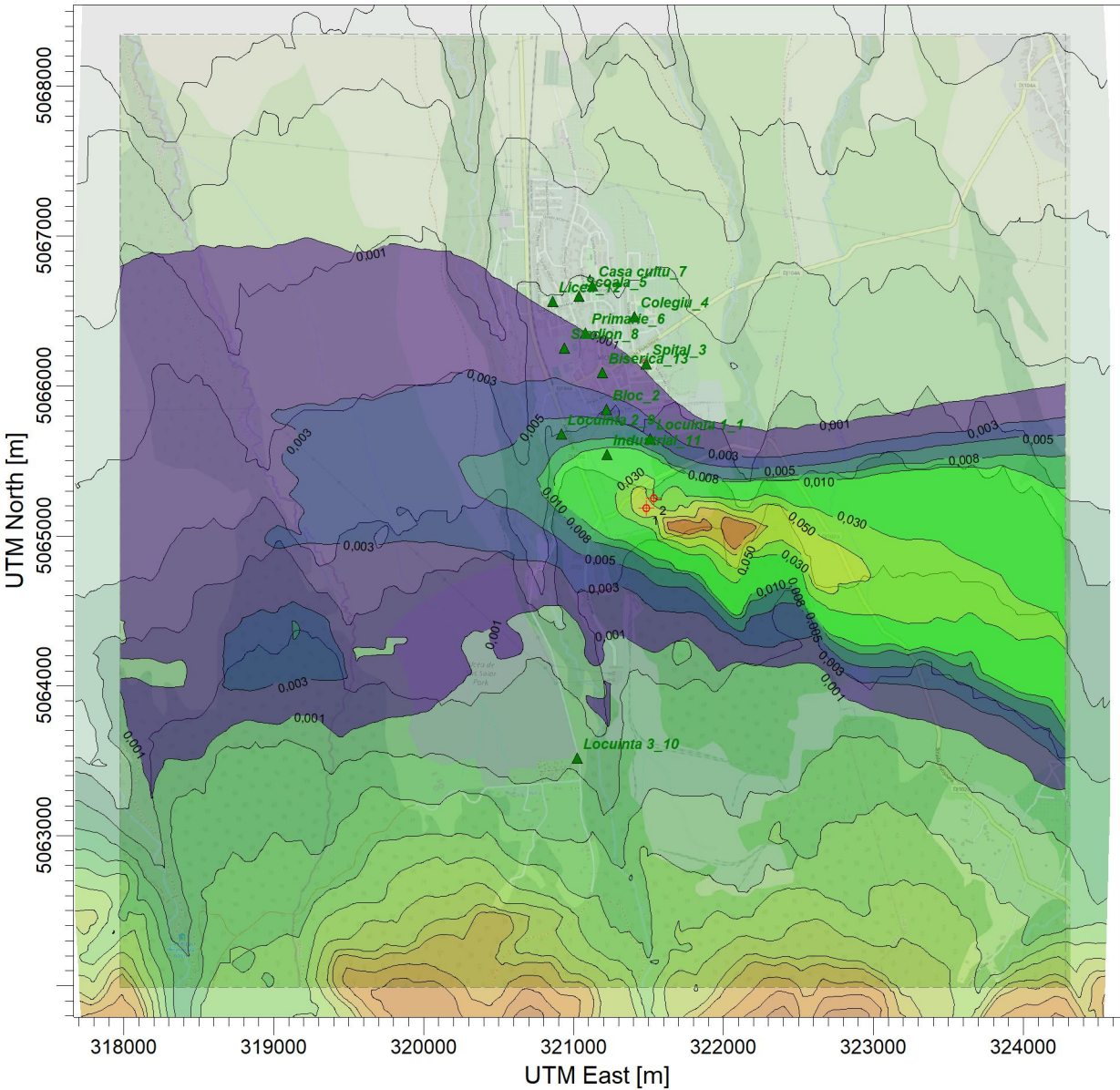
SCALE:

1:46.000

0

1 km

PROJECT NO.:



$\mu\text{g}/\text{m}^3$

PLOT FILE OF 98.00TH PERCENTILE 1-HR VALUES FOR SOURCE GROUP: ALL

Max: 0,136 [$\mu\text{g}/\text{m}^3$] at (321758,06, 5065061,63)

PROJECT TITLE:

Stație de epurare ape uzate industriale rezultate de la fabrica Purolite Victoria și evacuarea acestora în râul Olt
Amoniac_ppm

COMMENTS:

Limită miros
CMA = 1,5 ppm

MODELING OPTIONS:

CONC, ELEV, AND, LOW_WIND,
RURAL, ALPHA, OPTIONS,
MODELING, USED:, FLAT,

RECEPTORS:

3734

OUTPUT TYPE:

Concentration

MAX:

0,003918

UNITS:

PPM

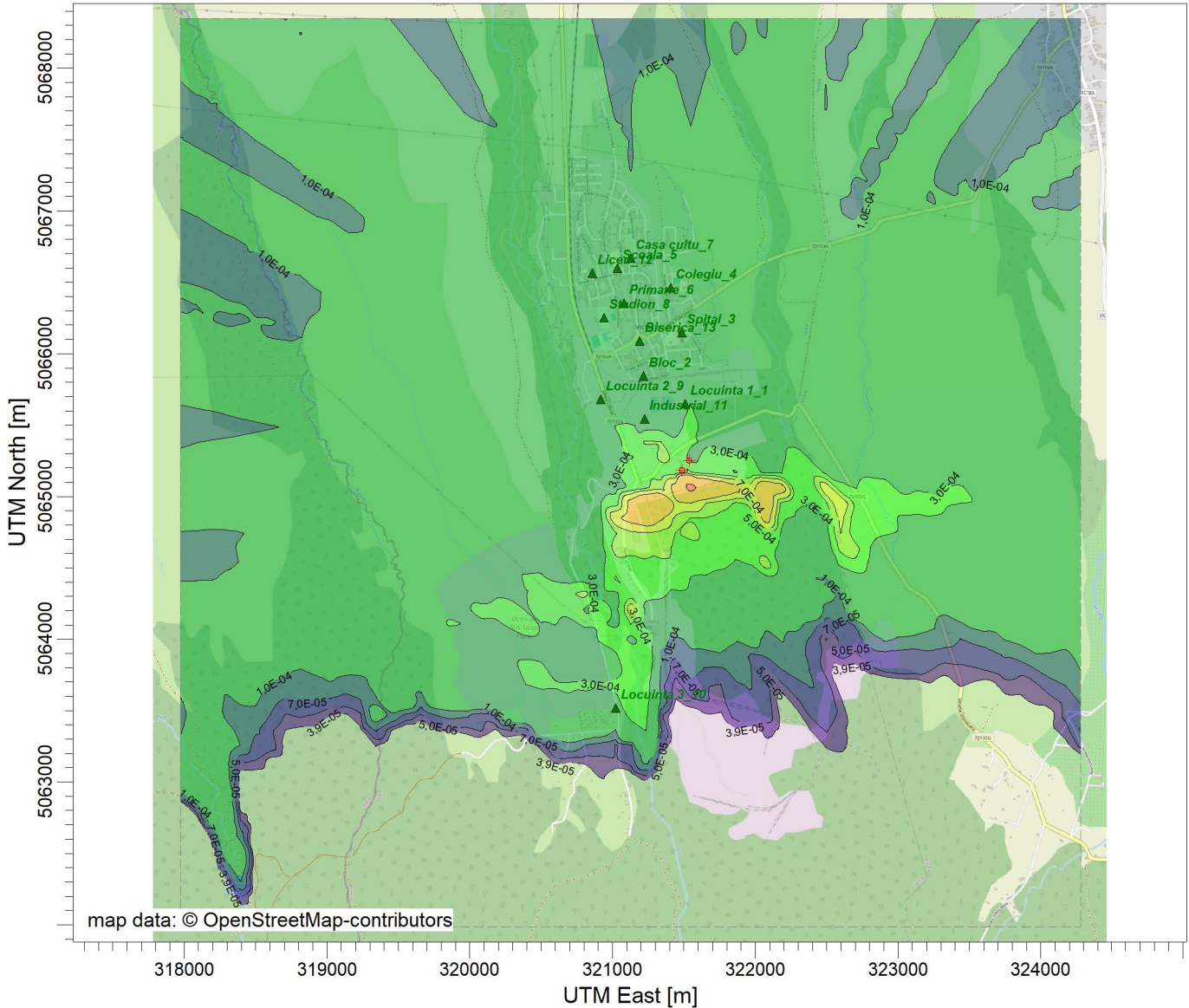
SCALE:

1:46.000

0

1 km

PROJECT NO.:



PPM

PLOT FILE OF HIGH 1ST HIGH 1-HR VALUES FOR SOURCE GROUP: ALL

3,9E-03

3,0E-03

1,0E-03

7,0E-04

5,0E-04

3,0E-04

1,0E-04

7,0E-05

5,0E-05

3,9E-05

Stație de epurare ape uzate industriale rezultate de la fabrica Purolite Victoria și evacuarea acestora în râul Olt
Amoniac_Concentrație zilnică_Calm atmosferic

STAS 12574-87
Prag de intervenție:
CMA zilnic = 100 µg/m3
Prag de alertă:
P alertă = 70 µg/m3

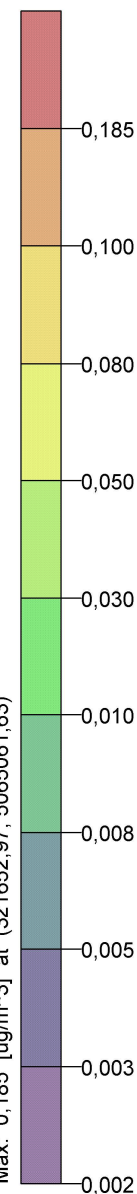
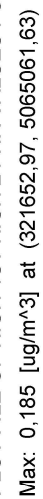
2

3734

Concentration

0,185 ug/m³

PLOT FILE OF HIGH 1ST HIGH 24-HR VALUES FOR SOURCE GROUP: ALL



1:46.000



PROJECT NO.:

PROJECT TITLE:

Stație de epurare ape uzate industriale rezultate de la fabrica Purolite Victoria și evacuarea acestora în râul Olt
Amoniac_Concentrație zilnică_Percentila 98_Calm atmosferic

COMMENTS:

STAS 12574-87
Prag de intervenție:
CMA zilnic = 100 µg/m3
Prag de alertă:
P alertă = 70 µg/m3

SOURCES:

2

RECEPTORS:

3734

OUTPUT TYPE:

Concentration

MAX:

7,1E-02 ug/m^3

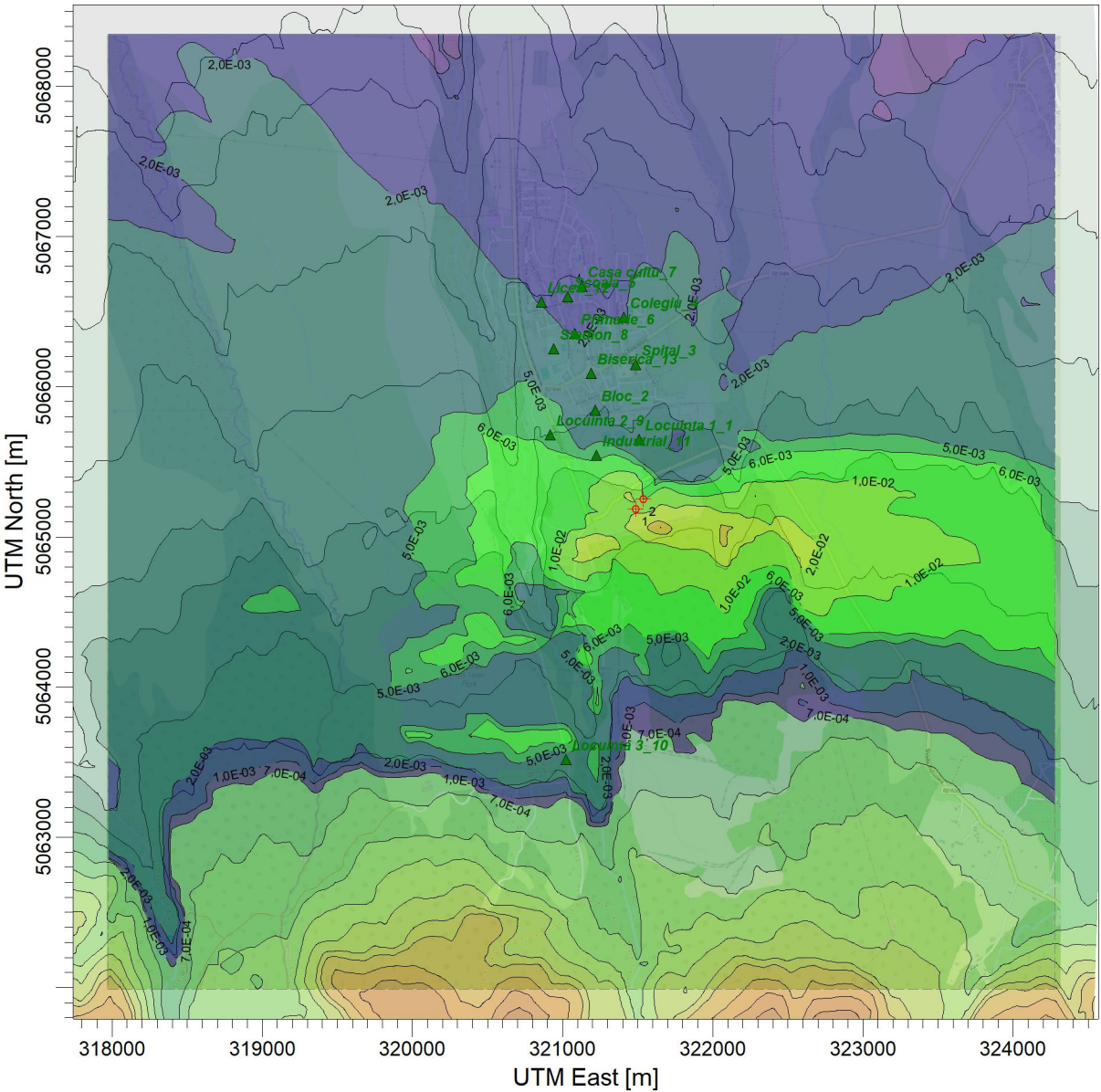
SCALE:

1:46.000

0

1 km

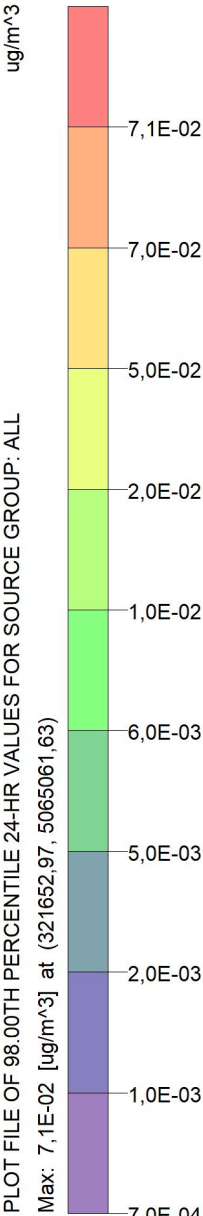
PROJECT NO.:



ug/m^3

PLOT FILE OF 98.00TH PERCENTILE 24-HR VALUES FOR SOURCE GROUP: ALL

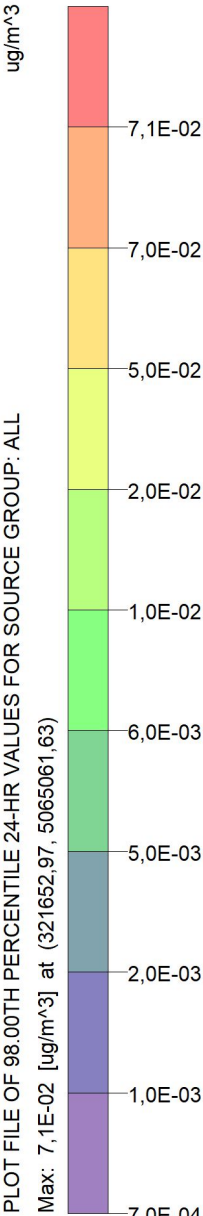
Max: 7,1E-02 [ug/m^3] at (321652,97, 5065061,63)



ug/m^3

PLOT FILE OF 98.00TH PERCENTILE 24-HR VALUES FOR SOURCE GROUP: ALL

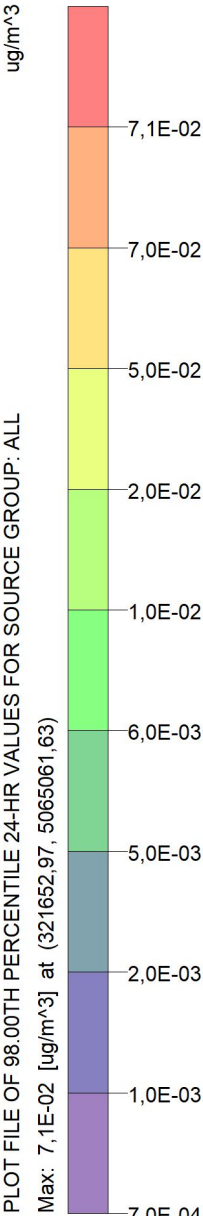
Max: 7,1E-02 [ug/m^3] at (321652,97, 5065061,63)



ug/m^3

PLOT FILE OF 98.00TH PERCENTILE 24-HR VALUES FOR SOURCE GROUP: ALL

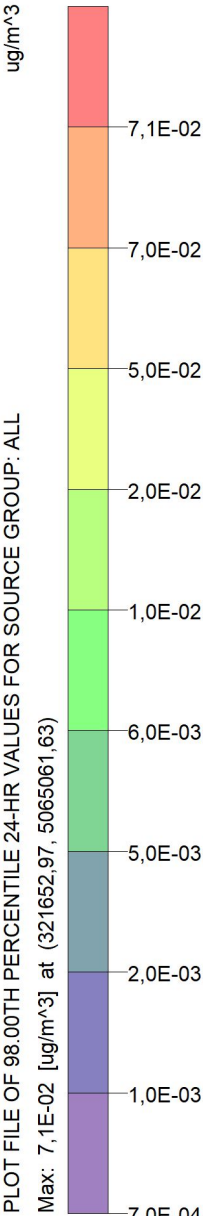
Max: 7,1E-02 [ug/m^3] at (321652,97, 5065061,63)



ug/m^3

PLOT FILE OF 98.00TH PERCENTILE 24-HR VALUES FOR SOURCE GROUP: ALL

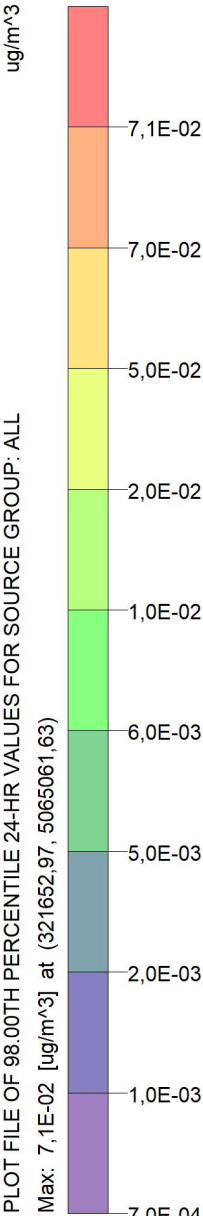
Max: 7,1E-02 [ug/m^3] at (321652,97, 5065061,63)



ug/m^3

PLOT FILE OF 98.00TH PERCENTILE 24-HR VALUES FOR SOURCE GROUP: ALL

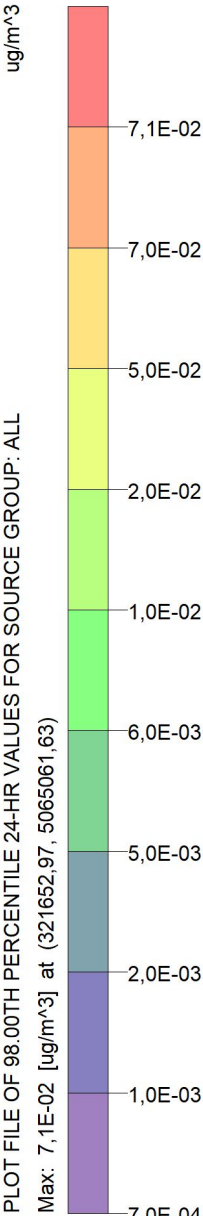
Max: 7,1E-02 [ug/m^3] at (321652,97, 5065061,63)



ug/m^3

PLOT FILE OF 98.00TH PERCENTILE 24-HR VALUES FOR SOURCE GROUP: ALL

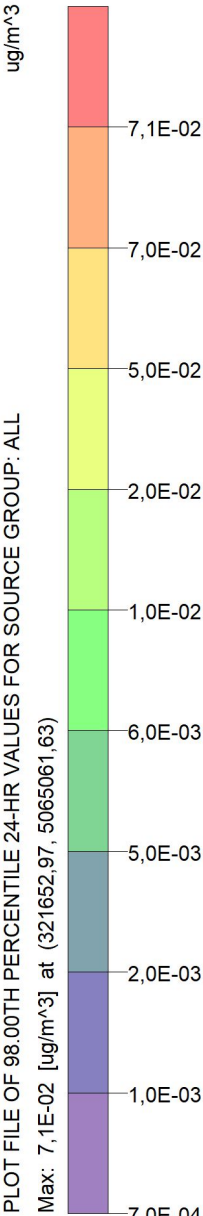
Max: 7,1E-02 [ug/m^3] at (321652,97, 5065061,63)



ug/m^3

PLOT FILE OF 98.00TH PERCENTILE 24-HR VALUES FOR SOURCE GROUP: ALL

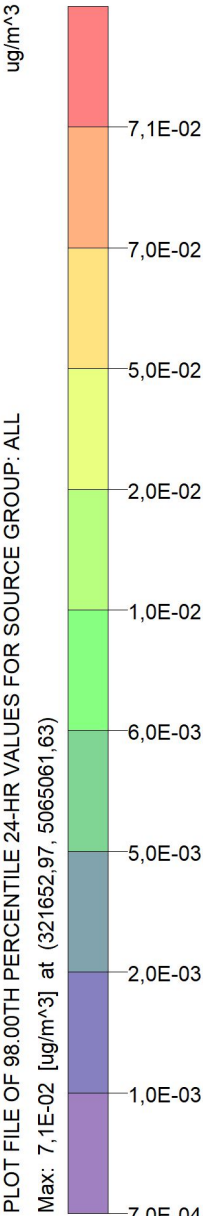
Max: 7,1E-02 [ug/m^3] at (321652,97, 5065061,63)



ug/m^3

PLOT FILE OF 98.00TH PERCENTILE 24-HR VALUES FOR SOURCE GROUP: ALL

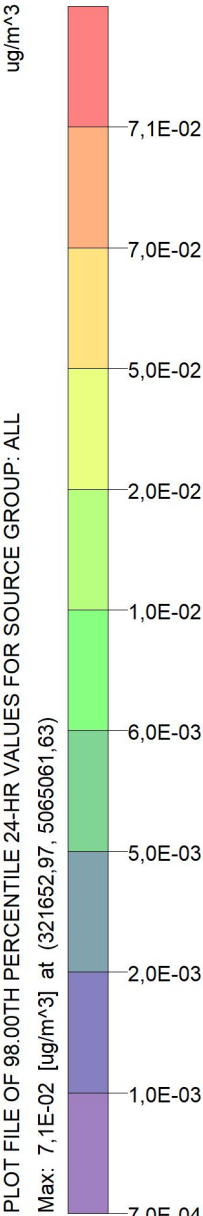
Max: 7,1E-02 [ug/m^3] at (321652,97, 5065061,63)



ug/m^3

PLOT FILE OF 98.00TH PERCENTILE 24-HR VALUES FOR SOURCE GROUP: ALL

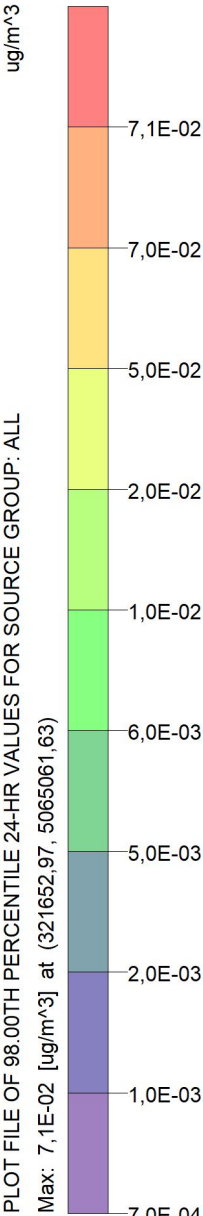
Max: 7,1E-02 [ug/m^3] at (321652,97, 5065061,63)



ug/m^3

PLOT FILE OF 98.00TH PERCENTILE 24-HR VALUES FOR SOURCE GROUP: ALL

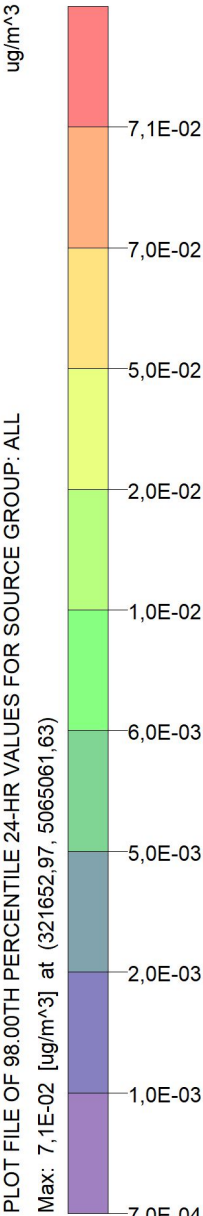
Max: 7,1E-02 [ug/m^3] at (321652,97, 5065061,63)



ug/m^3

PLOT FILE OF 98.00TH PERCENTILE 24-HR VALUES FOR SOURCE GROUP: ALL

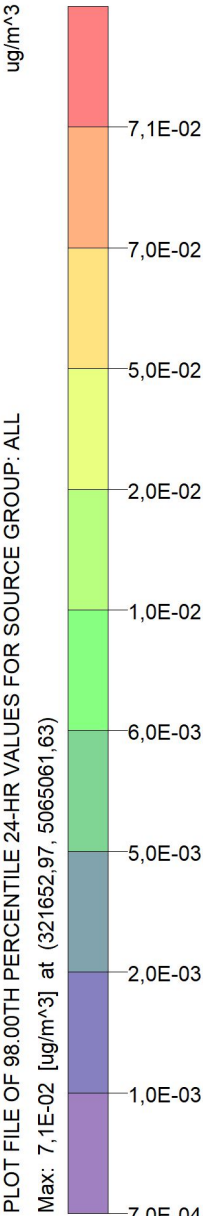
Max: 7,1E-02 [ug/m^3] at (321652,97, 5065061,63)



ug/m^3

PLOT FILE OF 98.00TH PERCENTILE 24-HR VALUES FOR SOURCE GROUP: ALL

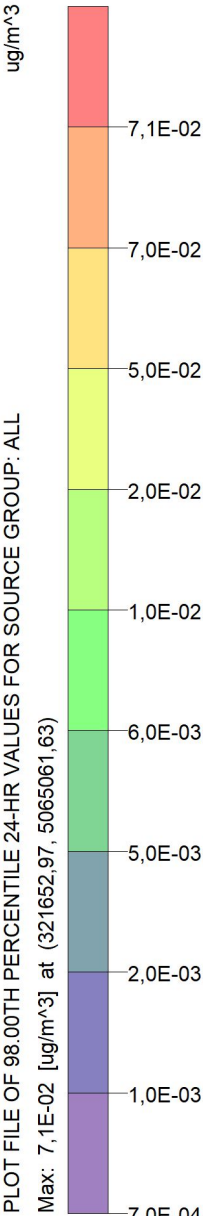
Max: 7,1E-02 [ug/m^3] at (321652,97, 5065061,63)



ug/m^3

PLOT FILE OF 98.00TH PERCENTILE 24-HR VALUES FOR SOURCE GROUP: ALL

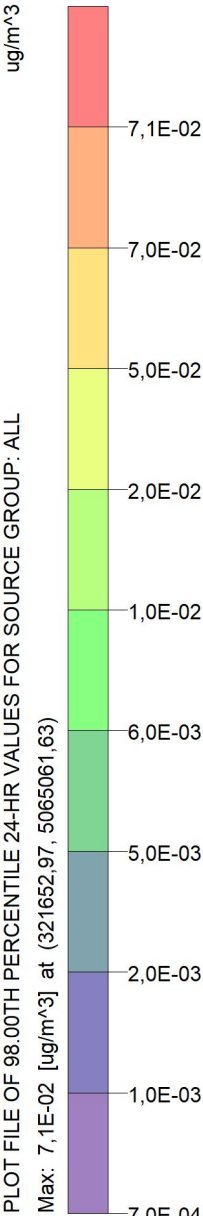
Max: 7,1E-02 [ug/m^3] at (321652,97, 5065061,63)



ug/m^3

PLOT FILE OF 98.00TH PERCENTILE 24-HR VALUES FOR SOURCE GROUP: ALL

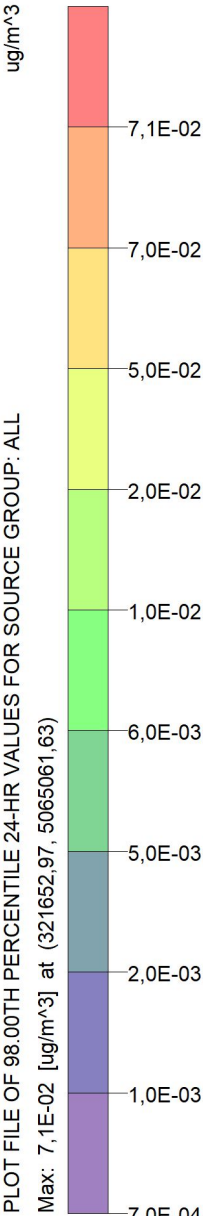
Max: 7,1E-02 [ug/m^3] at (321652,97, 5065061,63)



ug/m^3

PLOT FILE OF 98.00TH PERCENTILE 24-HR VALUES FOR SOURCE GROUP: ALL

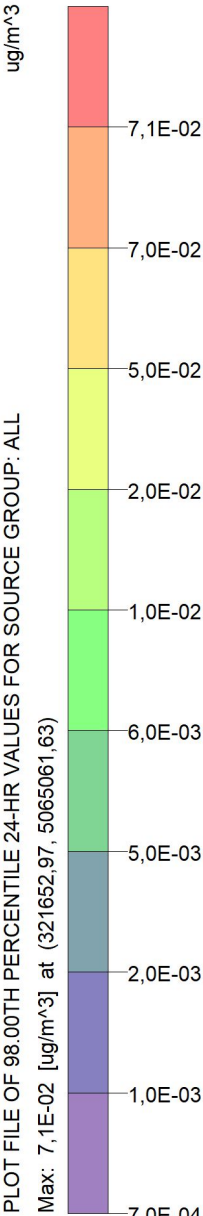
Max: 7,1E-02 [ug/m^3] at (321652,97, 5065061,63)



ug/m^3

PLOT FILE OF 98.00TH PERCENTILE 24-HR VALUES FOR SOURCE GROUP: ALL

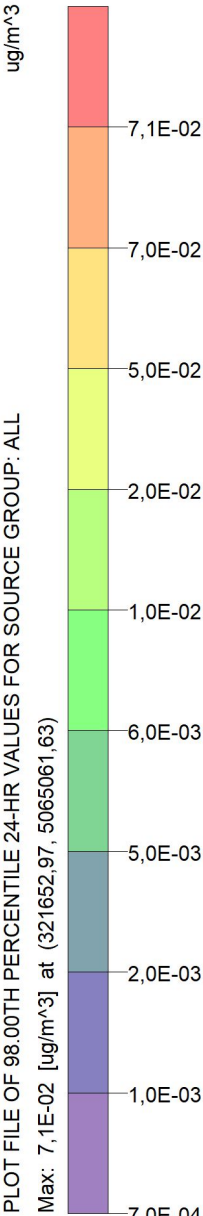
Max: 7,1E-02 [ug/m^3] at (321652,97, 5065061,63)



ug/m^3

PLOT FILE OF 98.00TH PERCENTILE 24-HR VALUES FOR SOURCE GROUP: ALL

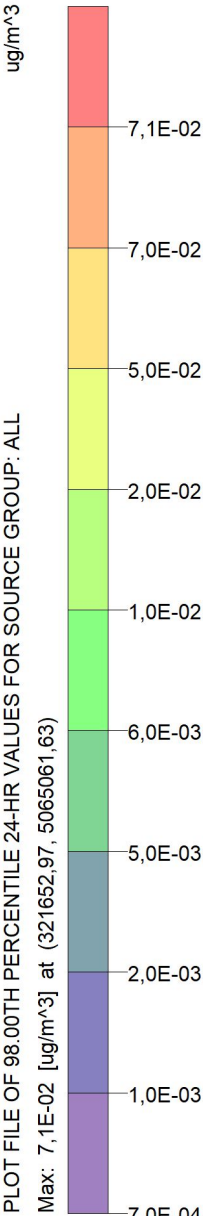
Max: 7,1E-02 [ug/m^3] at (321652,97, 5065061,63)



ug/m^3

PLOT FILE OF 98.00TH PERCENTILE 24-HR VALUES FOR SOURCE GROUP: ALL

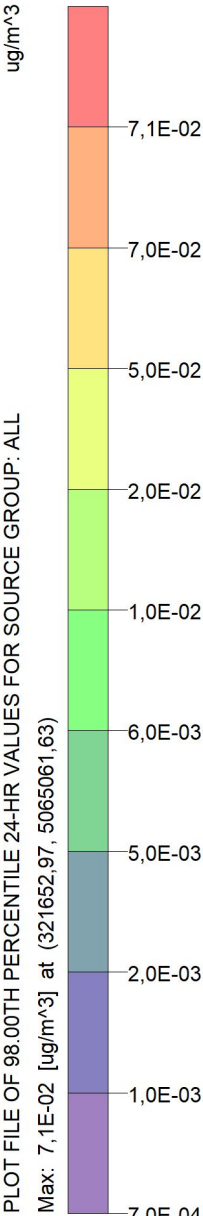
Max: 7,1E-02 [ug/m^3] at (321652,97, 5065061,63)



ug/m^3

PLOT FILE OF 98.00TH PERCENTILE 24-HR VALUES FOR SOURCE GROUP: ALL

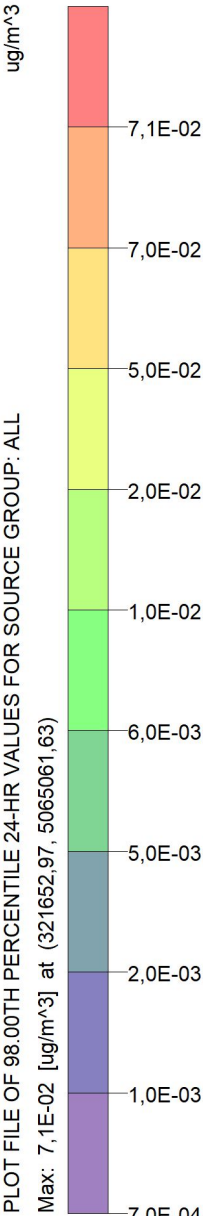
Max: 7,1E-02 [ug/m^3] at (321652,97, 5065061,63)



ug/m^3

PLOT FILE OF 98.00TH PERCENTILE 24-HR VALUES FOR SOURCE GROUP: ALL

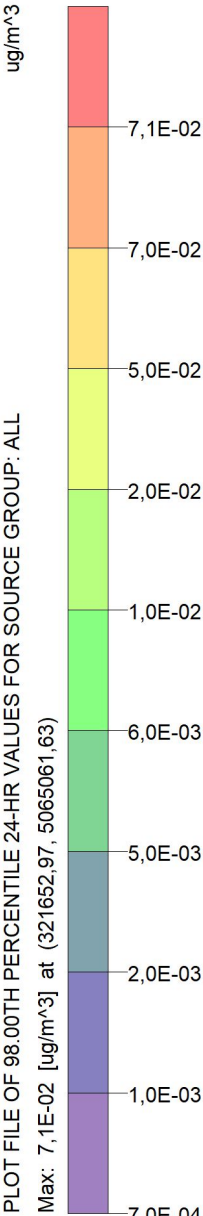
Max: 7,1E-02 [ug/m^3] at (321652,97, 5065061,63)



ug/m^3

PLOT FILE OF 98.00TH PERCENTILE 24-HR VALUES FOR SOURCE GROUP: ALL

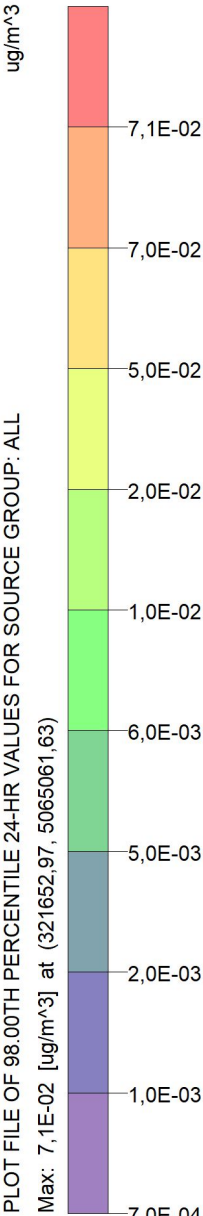
Max: 7,1E-02 [ug/m^3] at (321652,97, 5065061,63)



ug/m^3

PLOT FILE OF 98.00TH PERCENTILE 24-HR VALUES FOR SOURCE GROUP: ALL

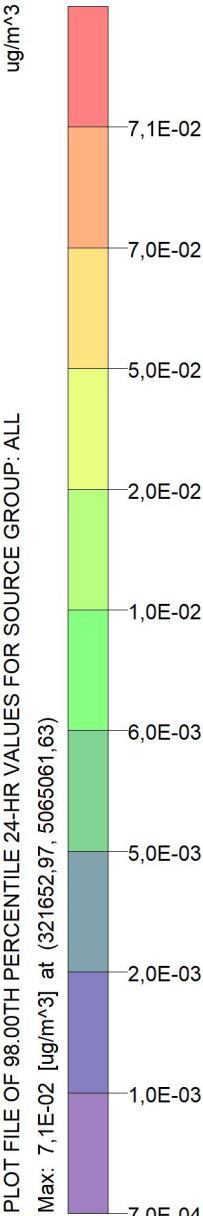
Max: 7,1E-02 [ug/m^3] at (321652,97, 5065061,63)



ug/m^3

PLOT FILE OF 98.00TH PERCENTILE 24-HR VALUES FOR SOURCE GROUP: ALL

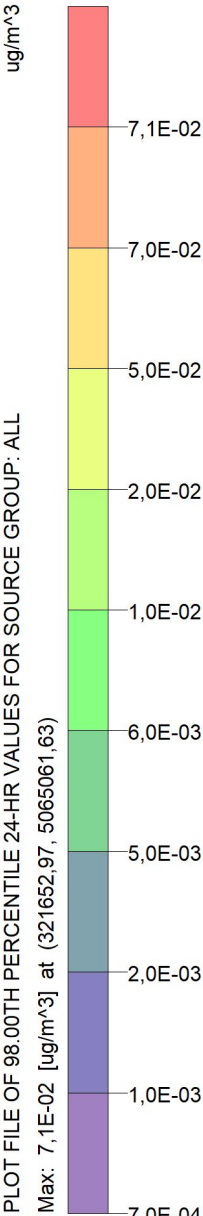
Max: 7,1E-02 [ug/m^3] at (321652,97, 5065061,63)



ug/m^3

PLOT FILE OF 98.00TH PERCENTILE 24-HR VALUES FOR SOURCE GROUP: ALL

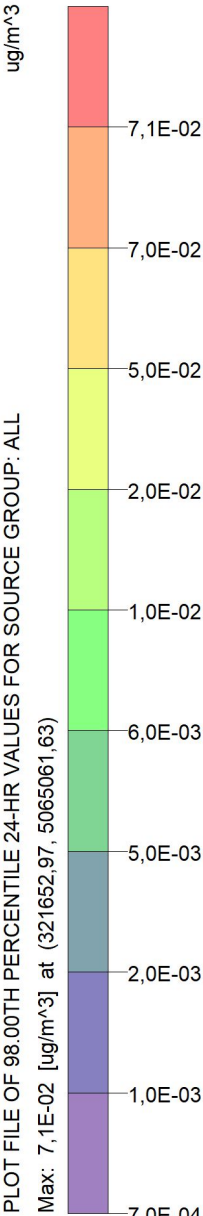
Max: 7,1E-02 [ug/m^3] at (321652,97, 5065061,63)



ug/m^3

PLOT FILE OF 98.00TH PERCENTILE 24-HR VALUES FOR SOURCE GROUP: ALL

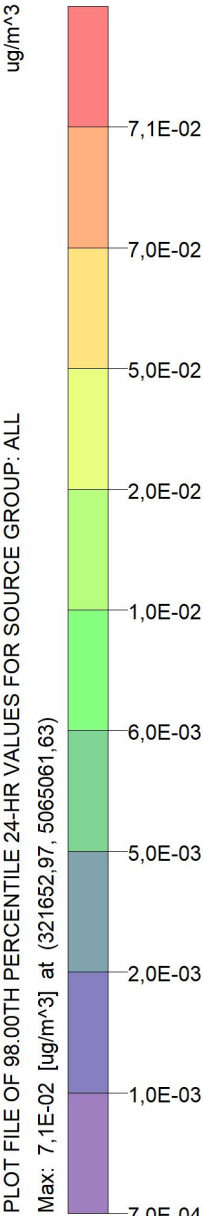
Max: 7,1E-02 [ug/m^3] at (321652,97, 5065061,63)



ug/m^3

PLOT FILE OF 98.00TH PERCENTILE 24-HR VALUES FOR SOURCE GROUP: ALL

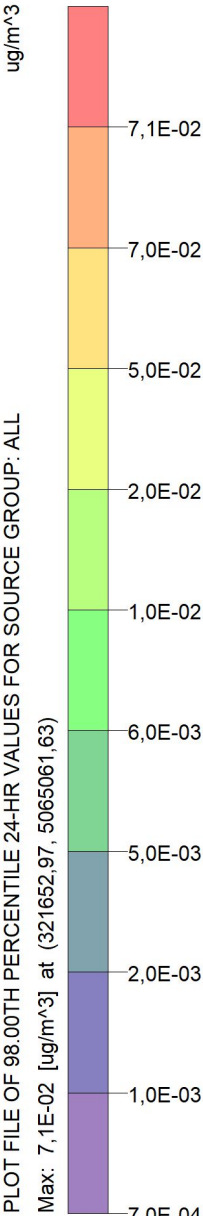
Max: 7,1E-02 [ug/m^3] at (321652,97, 5065061,63)



ug/m^3

PLOT FILE OF 98.00TH PERCENTILE 24-HR VALUES FOR SOURCE GROUP: ALL

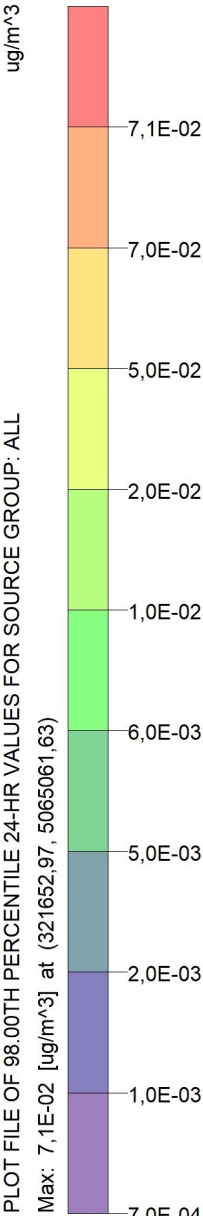
Max: 7,1E-02 [ug/m^3] at (321652,97, 5065061,63)



ug/m^3

PLOT FILE OF 98.00TH PERCENTILE 24-HR VALUES FOR SOURCE GROUP: ALL

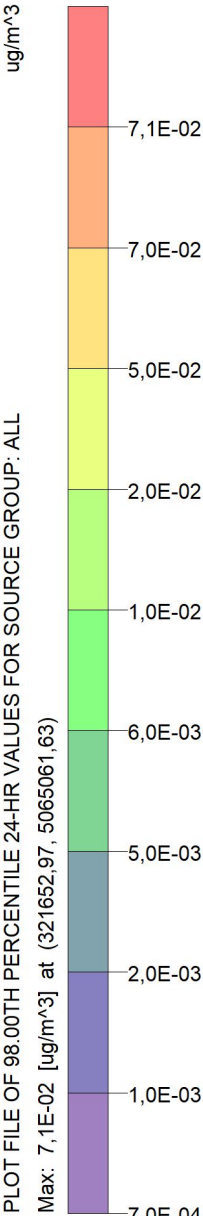
Max: 7,1E-02 [ug/m^3] at (321652,97, 5065061,63)



ug/m^3

PLOT FILE OF 98.00TH PERCENTILE 24-HR VALUES FOR SOURCE GROUP: ALL

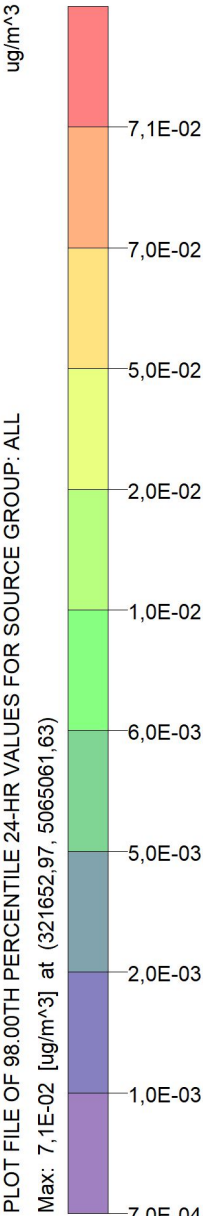
Max: 7,1E-02 [ug/m^3] at (321652,97, 5065061,63)



ug/m^3

PLOT FILE OF 98.00TH PERCENTILE 24-HR VALUES FOR SOURCE GROUP: ALL

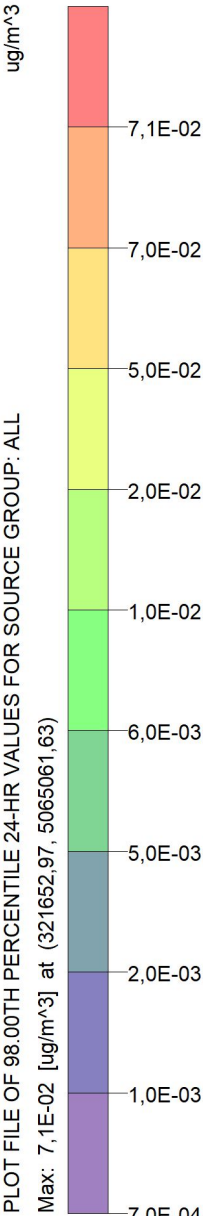
Max: 7,1E-02 [ug/m^3] at (321652,97, 5065061,63)



ug/m^3

PLOT FILE OF 98.00TH PERCENTILE 24-HR VALUES FOR SOURCE GROUP: ALL

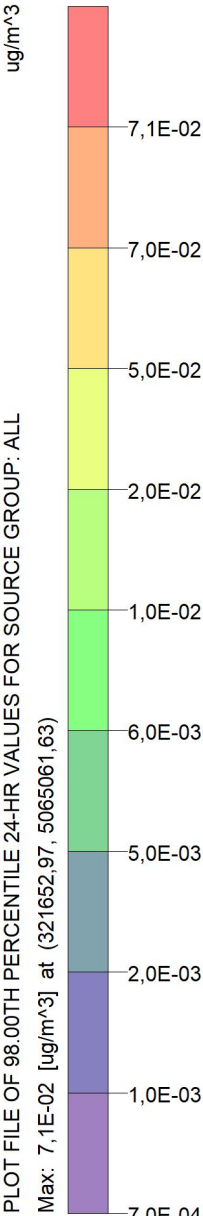
Max: 7,1E-02 [ug/m^3] at (321652,97, 5065061,63)



ug/m^3

PLOT FILE OF 98.00TH PERCENTILE 24-HR VALUES FOR SOURCE GROUP: ALL

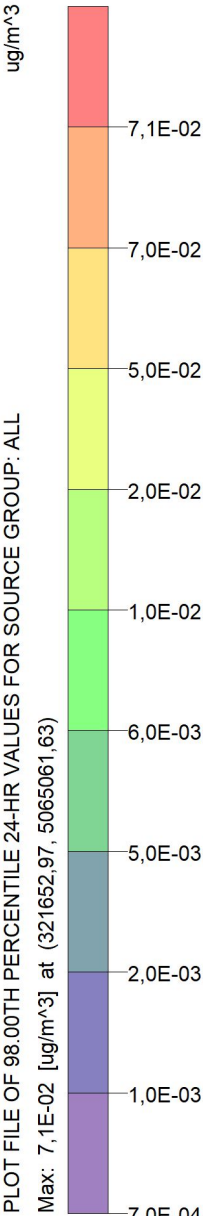
Max: 7,1E-02 [ug/m^3] at (321652,97, 5065061,63)



ug/m^3

PLOT FILE OF 98.00TH PERCENTILE 24-HR VALUES FOR SOURCE GROUP: ALL

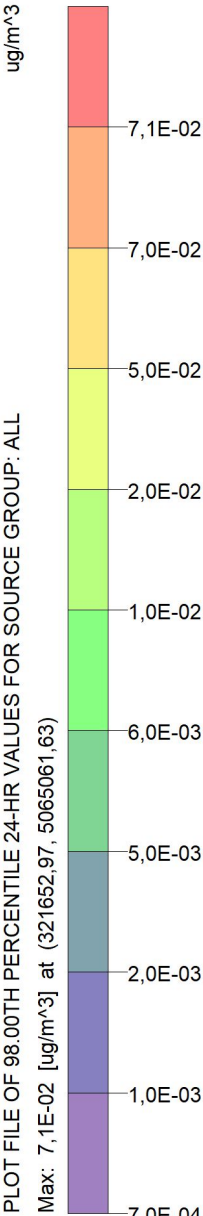
Max: 7,1E-02 [ug/m^3] at (321652,97, 5065061,63)



ug/m^3

PLOT FILE OF 98.00TH PERCENTILE 24-HR VALUES FOR SOURCE GROUP: ALL

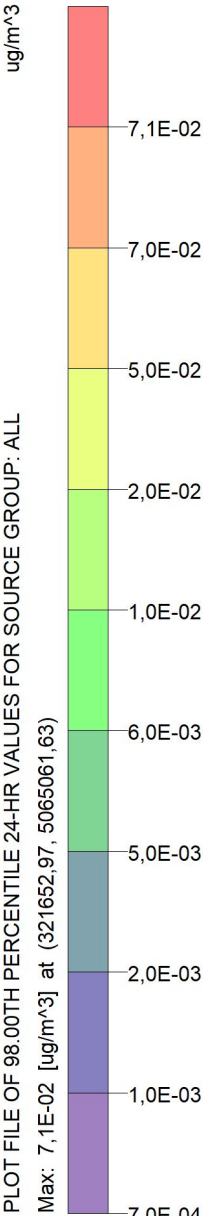
Max: 7,1E-02 [ug/m^3] at (321652,97, 5065061,63)



ug/m^3

PLOT FILE OF 98.00TH PERCENTILE 24-HR VALUES FOR SOURCE GROUP: ALL

Max: 7,1E-02 [ug/m^3] at (321652,97, 5065061,63)



ug/m^3

PLOT FILE OF 98.00TH PERCENTILE 24-HR VALUES FOR SOURCE GROUP: ALL

Max: 7,1E-02 [ug/m^3] at (3

PROJECT TITLE:

Stație de epurare ape uzate industriale rezultate de la fabrica Purolite Victoria și evacuarea acestora în râul Olt
Acid sulfuric_Concentrație 30min_Calm atmosferic

COMMENTS:

STAS 12574-87
Prag de intervenție:
CMA 30 min = 30 $\mu\text{g}/\text{m}^3$
Prag de alertă:
P alertă = 21 $\mu\text{g}/\text{m}^3$

MODELING OPTIONS:

**CONC, ELEV, AND, LOW_WIND,
RURAL, ALPHA, OPTIONS,
MODELING, USED:, FLAT,**

RECEPTORS:

3734

OUTPUT TYPE:

Concentration

MAX:

5,1958

UNITS:

$\mu\text{g}/\text{m}^3$

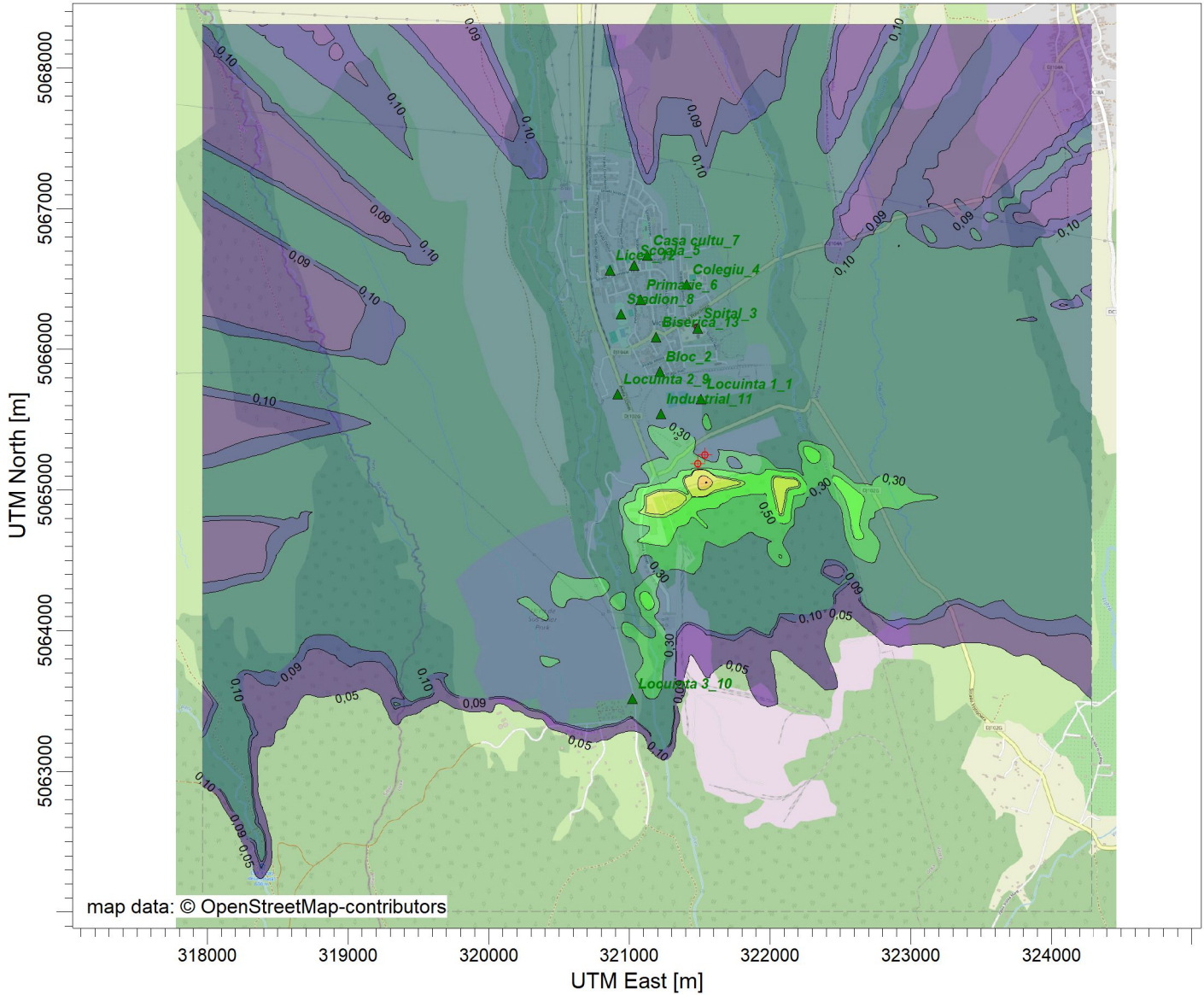
SCALE:

1:46.000

0

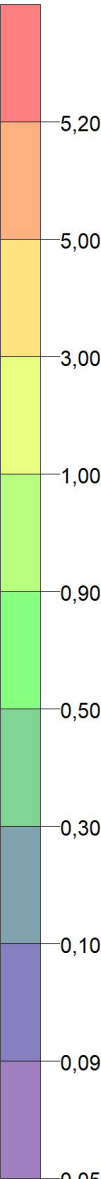
1 km

PROJECT NO.:



$\mu\text{g}/\text{m}^3$

PLOT FILE OF HIGH 1ST HIGH 30,0-MIN VALUES FOR SOURCE GROUP: ALL



PROJECT TITLE:

Stație de epurare ape uzate industriale rezultate de la fabrica Purolite Victoria și evacuarea acestora în râul Olt
Acid sulfuric_Concentrație 30min_Percentila 98_Calm atmosferic

COMMENTS:

Limită miros
CMA = 0,232 ppm

MODELING OPTIONS:

CONC, ELEV, USED:, MODELING,
NONFAULT, FLAT, OPTIONS,
LOW_WIND, AND, ALPHA, RURAL,

RECEPTORS:

3734

OUTPUT TYPE:

Concentration

MAX:

0,07651

UNITS:

ug/m^3

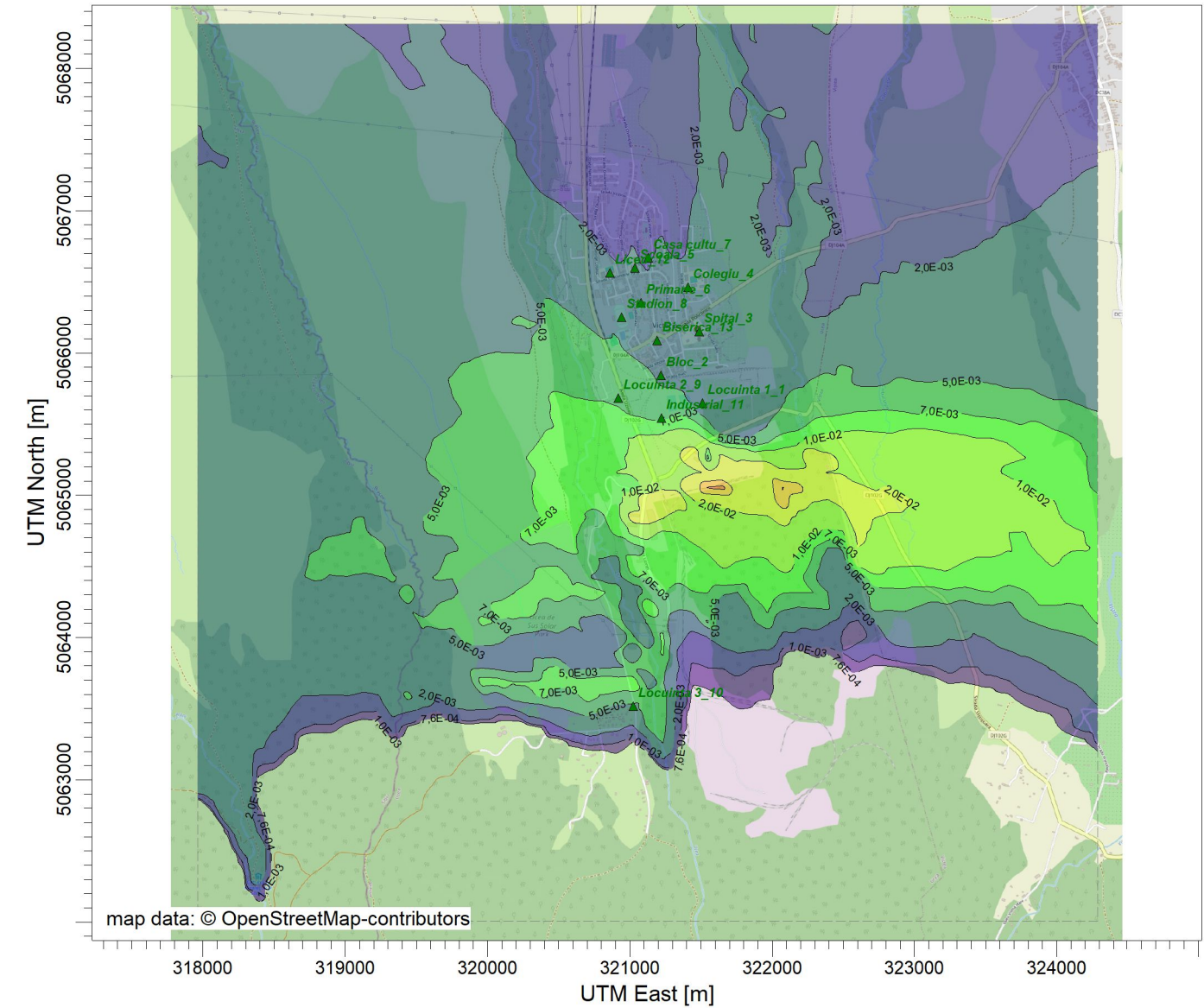
SCALE:

1:46.000

0

1 km

PROJECT NO.:



PLOT FILE OF 98.00TH PERCENTILE 30.0-MIN VALUES FOR SOURCE GROUP: ALL

ug/m^3

7,7E-02

7,0E-02

5,0E-02

2,0E-02

1,0E-02

7,0E-03

5,0E-03

2,0E-03

1,0E-03

7,6E-04

PROJECT TITLE:

Stație de epurare ape uzate industriale rezultate de la fabrica Purolite Victoria și evacuarea acestora în râul Olt
Acid sulfuric_Concentrație orară_Calm atmosferic

COMMENTS:

STAS 12574-87
Prag de intervenție:
CMA orar = 32,1 µg/m3
Prag de alertă:
P alertă = 22,89 µg/m3

SOURCES:

2

RECEPTORS:

3734

OUTPUT TYPE:

Concentration

MAX:

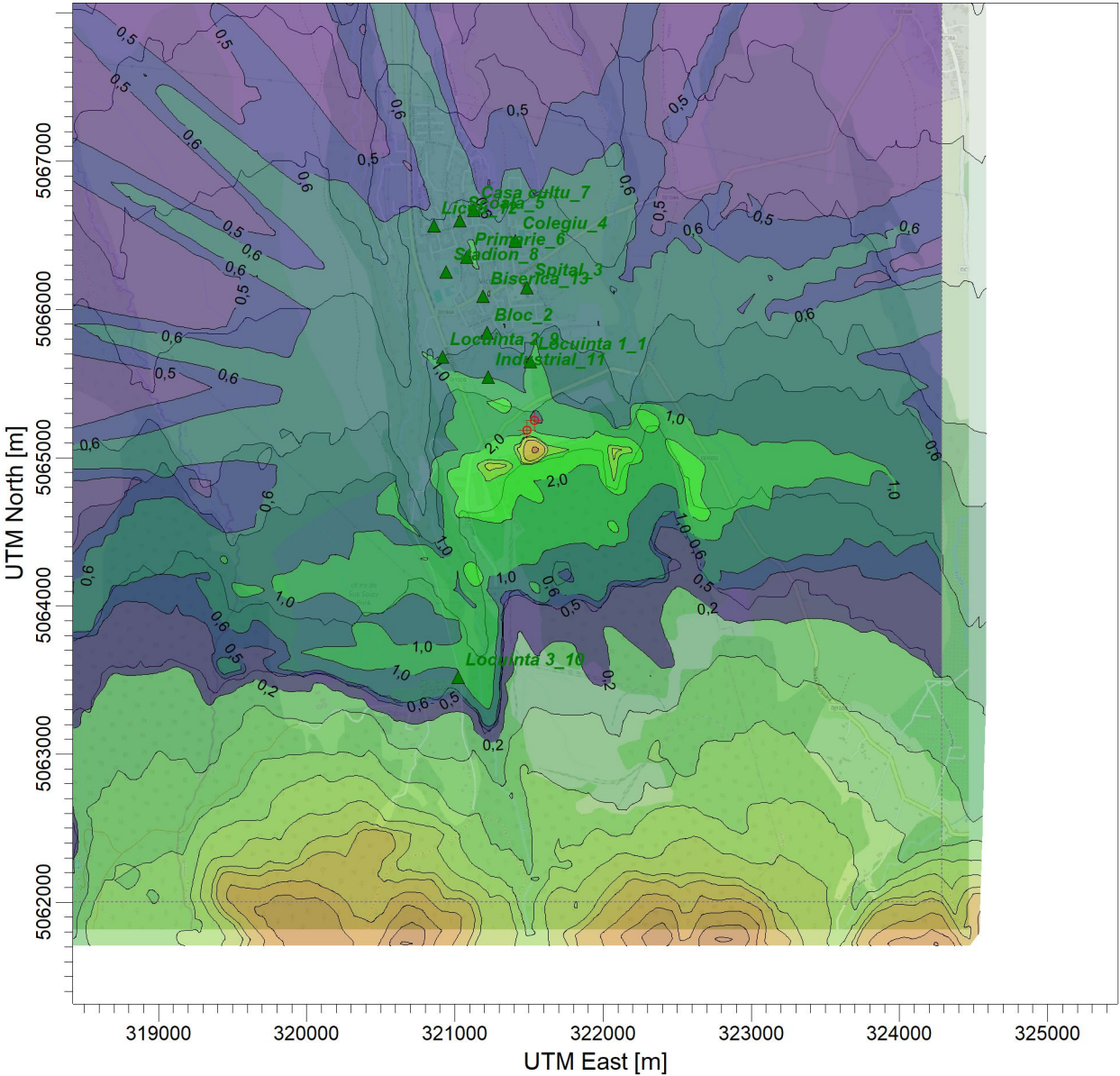
24,2 ug/m^3

SCALE:

1:46.000

0 1 km

PROJECT NO.:



ug/m^3

PLOT FILE OF HIGH 1ST HIGH 1-HR VALUES FOR SOURCE GROUP: ALL

Max: 24,2 [ug/m^3] at (321546,41, 5065053,74)

PROJECT TITLE:

Stație de epurare ape uzate industriale rezultate de la fabrica Purolite Victoria și evacuarea acestora în râul Olt
Acid sulfuric_Concentrație orară_Percentila 98_Calm atmosferic

COMMENTS:

STAS 12574-87
Prag de intervenție:
CMA orar = 32,1 $\mu\text{g}/\text{m}^3$
Prag de alertă:
P alertă = 22,89 $\mu\text{g}/\text{m}^3$

SOURCES:

2

RECEPTORS:

3734

OUTPUT TYPE:

Concentration

MAX:

0,782 $\mu\text{g}/\text{m}^3$

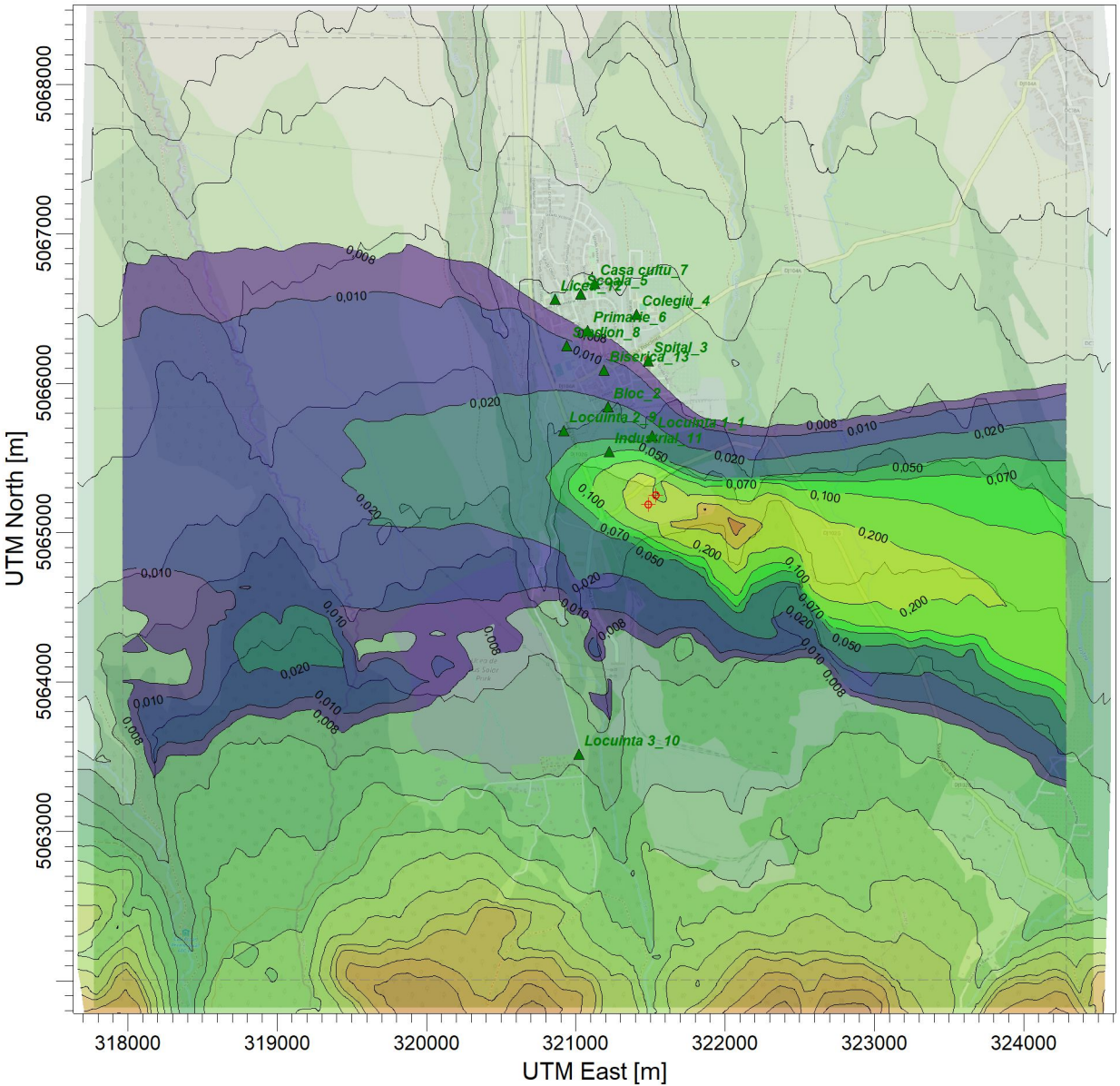
SCALE:

1:46.000

0

1 km

PROJECT NO.:



$\mu\text{g}/\text{m}^3$

PLOT FILE OF 98.00TH PERCENTILE 1-HR VALUES FOR SOURCE GROUP: ALL

Max: 0,782 [$\mu\text{g}/\text{m}^3$] at (322073,31, 5065053,74)

PROJECT TITLE:

Stație de epurare ape uzate industriale rezultate de la fabrica Purolite Victoria și evacuarea acestora în râul Olt
Acid sulfuric_ppm

COMMENTS:

Limită miros
CMA = 0,232 ppm

MODELING OPTIONS:

CONC, ELEV, AND, LOW_WIND,
RURAL, ALPHA, OPTIONS,
MODELING, USED:, FLAT,

RECEPTORS:

3734

OUTPUT TYPE:

Concentration

MAX:

0,006043

UNITS:

PPM

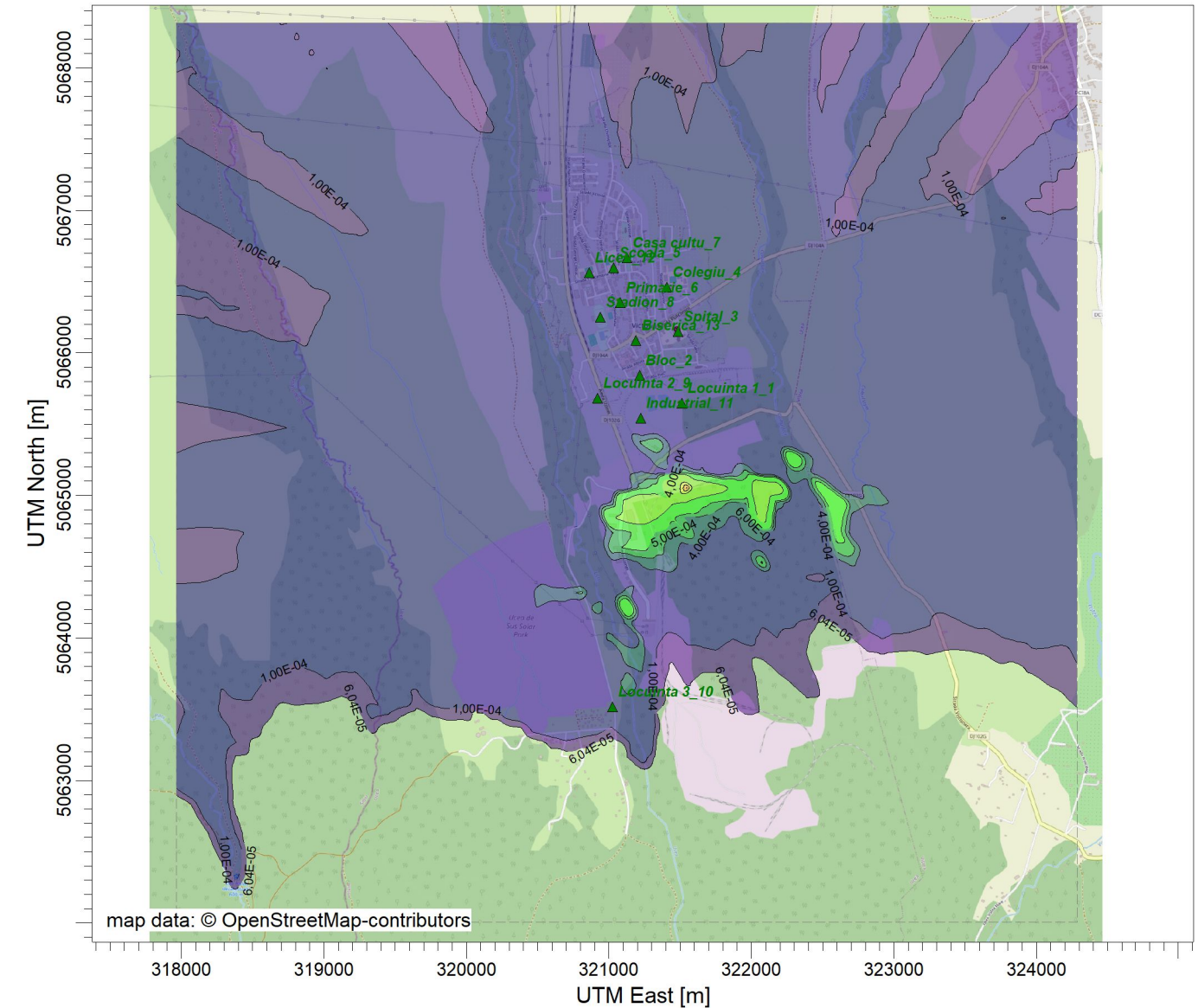
SCALE:

1:46.000

0

1 km

PROJECT NO.:



PROJECT TITLE:

Stație de epurare ape uzate industriale rezultate de la fabrica Purolite Victoria și evacuarea acestora în râul Olt
Acid sulfuric_Concentrație zilnică_Calm atmoferic

COMMENTS:

STAS 12574-87
Prag de intervenție:
CMA orar = 32,1 µg/m3
Prag de alertă:
P alertă = 22,89 µg/m3

SOURCES:

2

RECEPTORS:

3734

OUTPUT TYPE:

Concentration

MAX:

1,62 ug/m^3

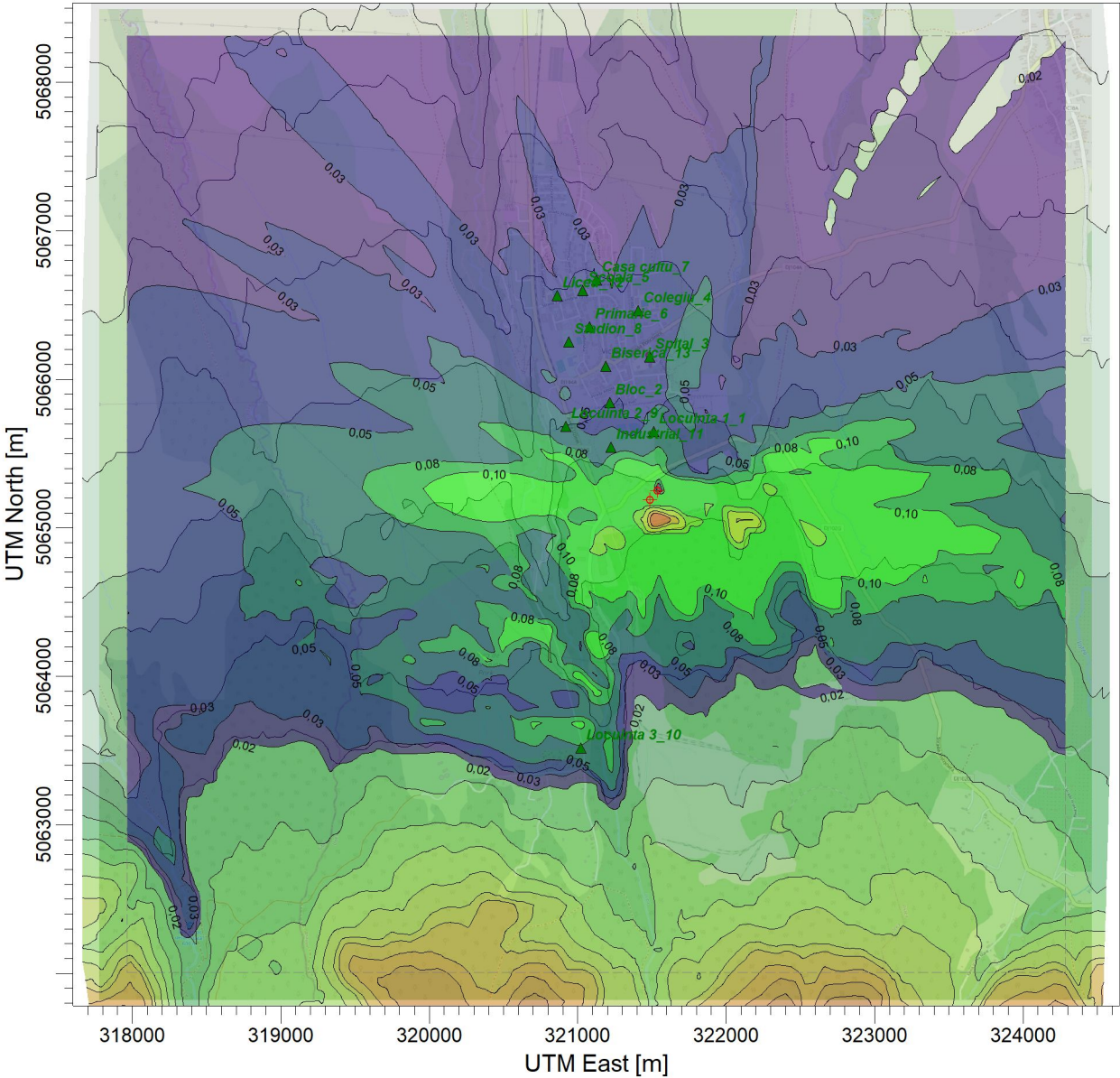
SCALE:

1:46.000

0

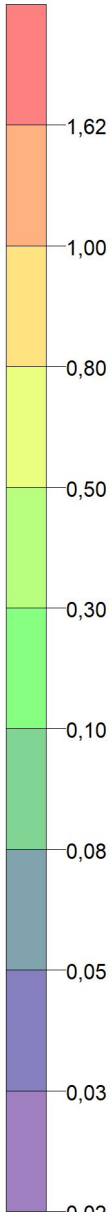
1 km

PROJECT NO.:



PLOT FILE OF HIGH 1ST HIGH 24-HR VALUES FOR SOURCE GROUP: ALL
Max: 1,62 [ug/m^3] at (321546,41, 5065053,74)

ug/m^3



PROJECT TITLE:

**Stație de epurare ape uzate industriale rezultate de la fabrica Purolite Victoria și evacuarea acestora în râul Olt
Acid sulfuric_Concentrație zilnică_Percentila 98_Calm atmosferic**

COMMENTS:

STAS 12574-87
Prag de intervenție:
CMA orar = 32,1 $\mu\text{g}/\text{m}^3$
Prag de alertă:
P alertă = 22,89 $\mu\text{g}/\text{m}^3$

SOURCES:

2

RECEPTORS:

3734

OUTPUT TYPE:

Concentration

MAX:

0,357 $\mu\text{g}/\text{m}^3$

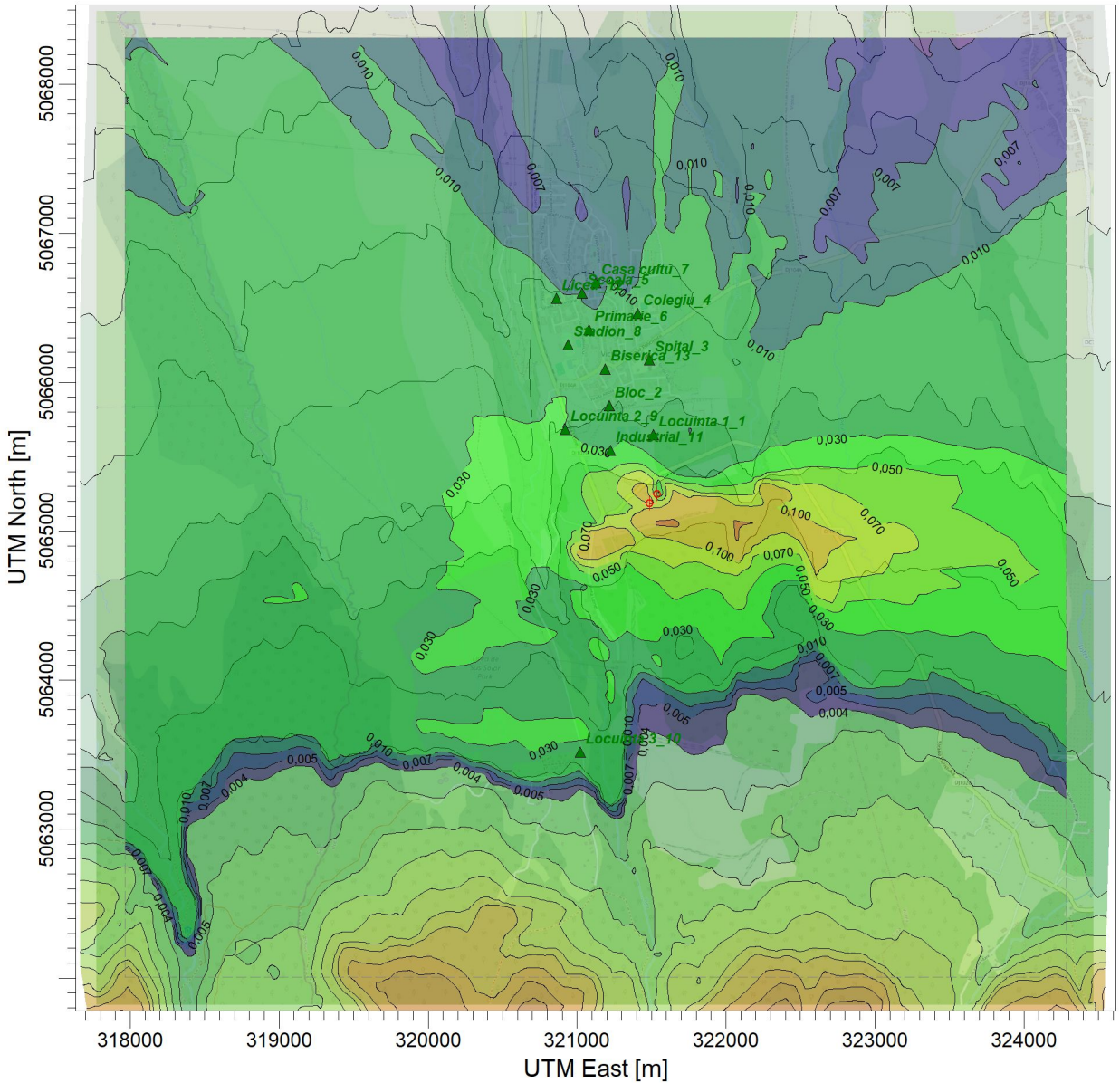
SCALE:

1:46.000

0

1 km

PROJECT NO.:



$\mu\text{g}/\text{m}^3$

PLOT FILE OF 98.00TH PERCENTILE 24-HR VALUES FOR SOURCE GROUP: ALL

Max: 0,357 [$\mu\text{g}/\text{m}^3$] at (321651,79, 5065053,74)